

## Product datasheet for **TA312265**

### SMAD3 Rabbit Polyclonal Antibody

#### Product data:

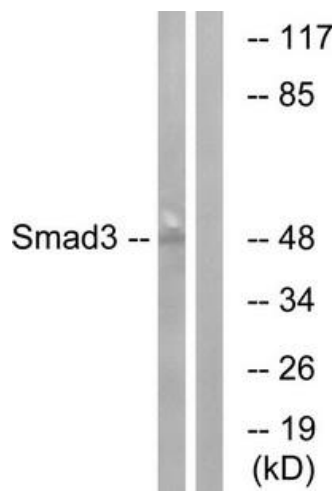
Product Type:	Primary Antibodies
Applications:	IHC, WB
Recommended Dilution:	WB: 1:500~1:3000, IHC: 1:50~1:100, ELISA: 1:5000
Reactivity:	Human, Mouse, Rat
Host:	Rabbit
Isotype:	IgG
Clonality:	Polyclonal
Immunogen:	The antiserum was produced against synthesized non-phosphopeptide derived from human Smad3 around the phosphorylation site of serine 204 (A-G-SP-P-N).
Formulation:	Phosphate buffered saline (without Mg <sup>2+</sup> and Ca <sup>2+</sup> ), pH 7.4, 150mM NaCl, 0.02% sodium azide and 50% glycerol.
Concentration:	lot specific
Purification:	The antibody was affinity-purified from rabbit antiserum by affinity-chromatography using epitope-specific immunogen.
Conjugation:	Unconjugated
Storage:	Store at -20°C as received.
Stability:	Stable for 12 months from date of receipt.
Gene Name:	SMAD family member 3
Database Link:	<a href="#">NP_005893</a> <a href="#">Entrez Gene 17127 MouseEntrez Gene 25631 RatEntrez Gene 4088 Human P84022</a>
Synonyms:	HSPC193; HsT17436; JV15-2; LDS1C; LDS3; MADH3
Note:	Smad3 (Ab-204) antibody detects endogenous levels of total Smad3 protein.
Protein Families:	Cancer stem cells, Druggable Genome, Embryonic stem cells, ES Cell Differentiation/IPS, Stem cell relevant signaling - JAK/STAT signaling pathway, Stem cell relevant signaling - TGFb/BMP signaling pathway, Transcription Factors



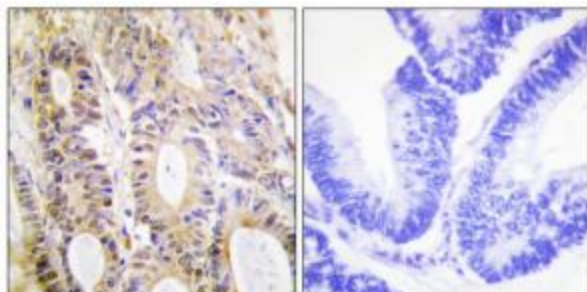
[View online »](#)

**Protein Pathways:** Adherens junction, Cell cycle, Chronic myeloid leukemia, Colorectal cancer, Pancreatic cancer, Pathways in cancer, TGF-beta signaling pathway, Wnt signaling pathway

**Product images:**



Western blot analysis of extracts from HUVEC cells, using Smad3 (Ab-204) antibody. The lane on the right is treated with the synthesized peptide.



Immunohistochemistry analysis of paraffin-embedded human colon tissue using Smad3 (Ab-204) antibody. The picture on the right is treated with the synthesized peptide.