

## Product datasheet for **TA312258**

### SMAD2 Rabbit Polyclonal Antibody

#### Product data:

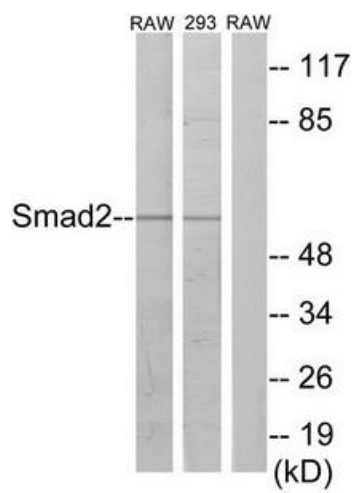
Product Type:	Primary Antibodies
Applications:	WB
Recommended Dilution:	WB: 1:500~1:3000, IHC: 1:50~1:100, IF: 1:100~1:500, ELISA: 1:1000
Reactivity:	Human, Mouse, Rat
Host:	Rabbit
Isotype:	IgG
Clonality:	Polyclonal
Immunogen:	The antiserum was produced against synthesized non-phosphopeptide derived from human Smad2 around the phosphorylation site of threonine 220 (P-E-TP-P-P).
Formulation:	Phosphate buffered saline (without Mg <sup>2+</sup> and Ca <sup>2+</sup> ), pH 7.4, 150mM NaCl, 0.02% sodium azide and 50% glycerol.
Concentration:	lot specific
Purification:	The antibody was affinity-purified from rabbit antiserum by affinity-chromatography using epitope-specific immunogen.
Conjugation:	Unconjugated
Storage:	Store at -20°C as received.
Stability:	Stable for 12 months from date of receipt.
Gene Name:	SMAD family member 2
Database Link:	<a href="#">NP_005892</a> <a href="#">Entrez Gene 17126 Mouse</a> <a href="#">Entrez Gene 29357 Rat</a> <a href="#">Entrez Gene 4087 Human</a> <a href="#">Q15796</a>
Synonyms:	hMAD-2; hSMAD2; JV18; JV18-1; MADH2; MADR2
Note:	Smad2 (Ab-220) antibody detects endogenous levels of total Smad2 protein
Protein Families:	Cancer stem cells, Druggable Genome, Embryonic stem cells, ES Cell Differentiation/IPS, Stem cell relevant signaling - JAK/STAT signaling pathway, Stem cell relevant signaling - TGFb/BMP signaling pathway, Transcription Factors



[View online »](#)

**Protein Pathways:** Adherens junction, Cell cycle, Colorectal cancer, Pancreatic cancer, Pathways in cancer, TGF-beta signaling pathway, Wnt signaling pathway

**Product images:**



Western blot analysis of extracts from RAW264.7 cells and 293 cells, using Smad2 (Ab-220) antibody. The lane on the right is treated with the synthesized peptide.