

Product datasheet for **TA312245**

TOB (TOB1) Rabbit Polyclonal Antibody

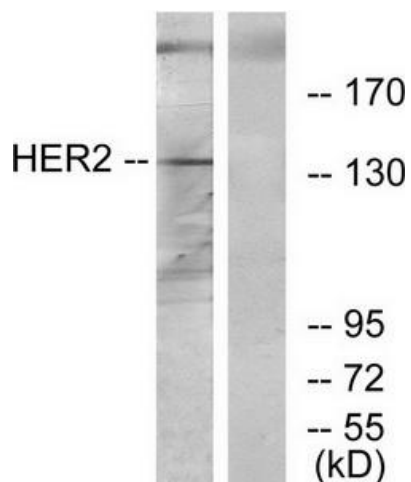
Product data:

Product Type:	Primary Antibodies
Applications:	IF, IHC, WB
Recommended Dilution:	WB: 1:500~1:3000, IHC: 1:50~1:100, IF: 1:100~1:500, ELISA: 1:20000
Reactivity:	Human, Mouse, Rat
Host:	Rabbit
Isotype:	IgG
Clonality:	Polyclonal
Immunogen:	The antiserum was produced against synthesized peptide derived from internal of human HER2.
Formulation:	Phosphate buffered saline (without Mg ²⁺ and Ca ²⁺), pH 7.4, 150mM NaCl, 0.02% sodium azide and 50% glycerol.
Concentration:	lot specific
Purification:	The antibody was affinity-purified from rabbit antiserum by affinity-chromatography using epitope-specific immunogen.
Conjugation:	Unconjugated
Storage:	Store at -20°C as received.
Stability:	Stable for 12 months from date of receipt.
Gene Name:	transducer of ERBB2, 1
Database Link:	NP_005740 Entrez Gene 22057 MouseEntrez Gene 170842 RatEntrez Gene 10140 Human P50616
Synonyms:	APRO5; APRO6; PIG49; TOB; TROB; TROB1
Note:	HER2 antibody detects endogenous levels of total HER2 protein.
Protein Families:	Druggable Genome

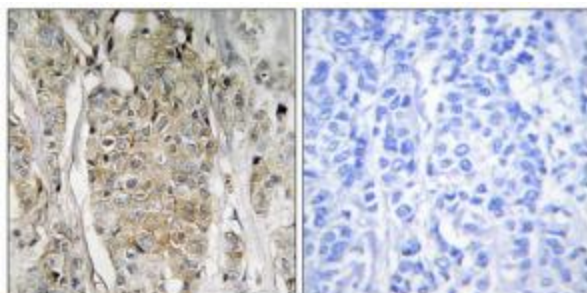


[View online »](#)

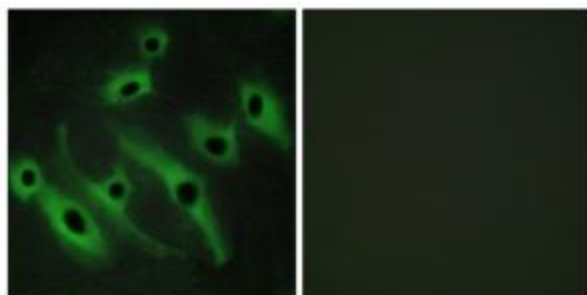
Product images:



Western blot analysis of extracts from 293 cells, using HER2 antibody. The lane on the right is treated with the synthesized peptide.



Immunohistochemistry analysis of paraffin-embedded human breast carcinoma tissue using HER2 antibody. The picture on the right is treated with the synthesized peptide.



Immunofluorescence analysis of HeLa cells, using HER2 antibody. The picture on the right is treated with the synthesized peptide.