

Product datasheet for **TA312235**

Cytokeratin 7 (KRT7) Rabbit Polyclonal Antibody

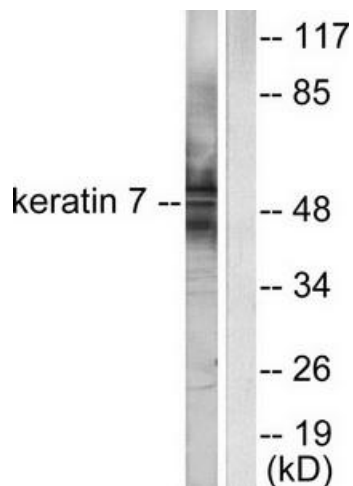
Product data:

Product Type:	Primary Antibodies
Applications:	IF, IHC, WB
Recommended Dilution:	WB: 1:500~1:3000, IHC: 1:50~1:100, IF: 1:100~1:500, ELISA: 1:5000
Reactivity:	Human
Host:	Rabbit
Isotype:	IgG
Clonality:	Polyclonal
Immunogen:	The antiserum was produced against synthesized peptide derived from human Keratin 7.
Formulation:	Phosphate buffered saline (without Mg ²⁺ and Ca ²⁺), pH 7.4, 150mM NaCl, 0.02% sodium azide and 50% glycerol.
Concentration:	lot specific
Purification:	The antibody was affinity-purified from rabbit antiserum by affinity-chromatography using epitope-specific immunogen.
Conjugation:	Unconjugated
Storage:	Store at -20°C as received.
Stability:	Stable for 12 months from date of receipt.
Gene Name:	keratin 7
Database Link:	NP_005547 Entrez Gene 3855 Human P08729
Synonyms:	CK7; K2C7; K7; SCL
Note:	Keratin 7 antibody detects endogenous levels of total Keratin 7 protein.
Protein Families:	ES Cell Differentiation/IPS

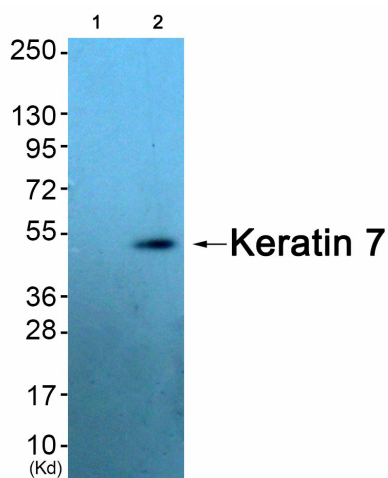


[View online »](#)

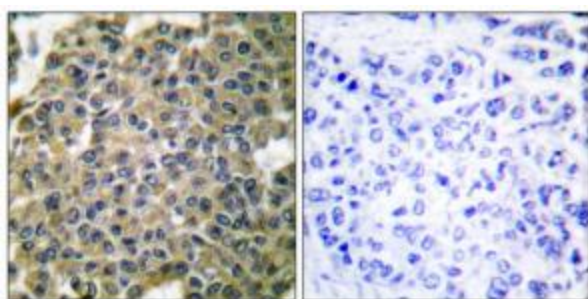
Product images:



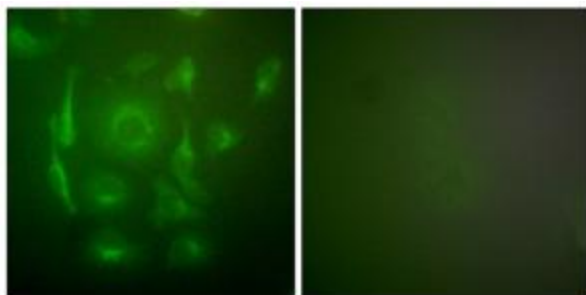
Western blot analysis of extracts from HepG2 cells, using Keratin 7 antibody (#TA312235). The lane on the right is treated with the synthesized peptide.



Western blot analysis of extracts from HeLa cells (Lane 2) and HepG2 cells (Lane 3), using Keratin 7 Antibody. The lane on the left is treated with synthesized peptide.



Immunohistochemical analysis of paraffin-embedded human breast carcinoma tissue using Keratin 7 antibody (#TA312235). The picture on the right is treated with the synthesized peptide.



Immunofluorescence analysis of HepG2 cells, using Keratin 7 antibody (#TA312235)The picture on the right is treated with the synthesized peptide.