

Product datasheet for **TA312234**

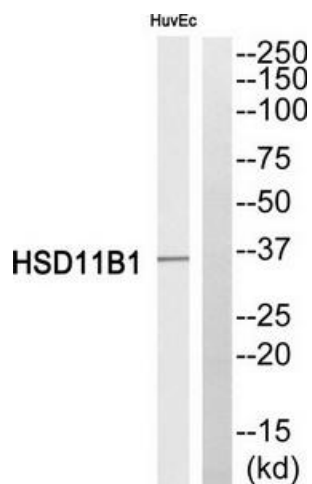
HSD11B1 Rabbit Polyclonal Antibody

Product data:

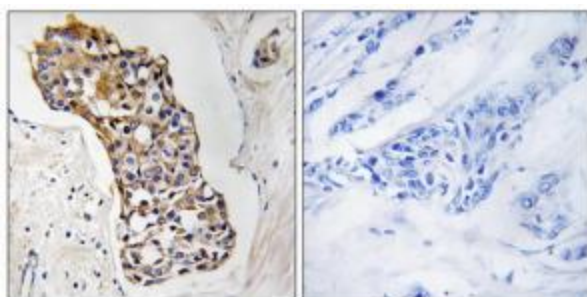
Product Type:	Primary Antibodies
Applications:	IHC, WB
Recommended Dilution:	WB: 1:500~1:3000, IHC: 1:50~1:100, ELISA: 1:40000
Reactivity:	Human, Mouse, Rat
Host:	Rabbit
Isotype:	IgG
Clonality:	Polyclonal
Immunogen:	The antiserum was produced against synthesized peptide derived from N-terminal of human HSD11B1.
Formulation:	Phosphate buffered saline (without Mg ²⁺ and Ca ²⁺), pH 7.4, 150mM NaCl, 0.02% sodium azide and 50% glycerol.
Concentration:	lot specific
Purification:	The antibody was affinity-purified from rabbit antiserum by affinity-chromatography using epitope-specific immunogen.
Conjugation:	Unconjugated
Storage:	Store at -20°C as received.
Stability:	Stable for 12 months from date of receipt.
Gene Name:	hydroxysteroid (11-beta) dehydrogenase 1
Database Link:	NP_005516 Entrez Gene 15483 Mouse Entrez Gene 25116 Rat Entrez Gene 3290 Human P28845
Synonyms:	11-beta-HSD1; 11-DH; CORTRD2; HDL; HSD11; HSD11B; HSD11L; SDR26C1
Note:	HSD11B1 antibody detects endogenous levels of total HSD11B1 protein.
Protein Families:	Druggable Genome, Transmembrane
Protein Pathways:	Androgen and estrogen metabolism, C21-Steroid hormone metabolism, Metabolic pathways



[View online »](#)

Product images:

Western blot analysis of extracts from HuvEc cells, using HSD11B1 antibody. The lane on the right is treated with the synthesized peptide.



Immunohistochemistry analysis of paraffin-embedded human breast carcinoma tissue, using HSD11B1 antibody. The picture on the right is treated with the synthesized peptide.