

Product datasheet for **TA312230**

Cofilin 1 (CFL1) Rabbit Polyclonal Antibody

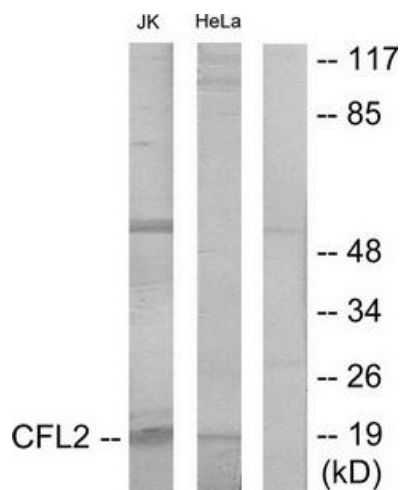
Product data:

Product Type:	Primary Antibodies
Applications:	WB
Recommended Dilution:	WB: 1:500~1:3000, ELISA: 1:40000
Reactivity:	Human, Mouse, Rat
Host:	Rabbit
Isotype:	IgG
Clonality:	Polyclonal
Immunogen:	The antiserum was produced against synthesized peptide derived from internal of human Cofilin.
Formulation:	Phosphate buffered saline (without Mg ²⁺ and Ca ²⁺), pH 7.4, 150mM NaCl, 0.02% sodium azide and 50% glycerol.
Concentration:	lot specific
Purification:	The antibody was affinity-purified from rabbit antiserum by affinity-chromatography using epitope-specific immunogen.
Conjugation:	Unconjugated
Storage:	Store at -20°C as received.
Stability:	Stable for 12 months from date of receipt.
Gene Name:	cofilin 1
Database Link:	NP_005498 Entrez Gene 12631 MouseEntrez Gene 29271 RatEntrez Gene 1072 Human P23528
Synonyms:	CFL; HEL-S-15
Note:	Cofilin antibody detects endogenous levels of total Cofilin protein.
Protein Families:	Druggable Genome
Protein Pathways:	Axon guidance, Fc gamma R-mediated phagocytosis, Regulation of actin cytoskeleton



[View online »](#)

Product images:



Western blot analysis of extracts from Jurkat cells and HeLa cells, using Cofilin antibody. The lane on the right is treated with the synthesized peptide.