

Product datasheet for **TA312229**

p60 CAF1 (CHAF1B) Rabbit Polyclonal Antibody

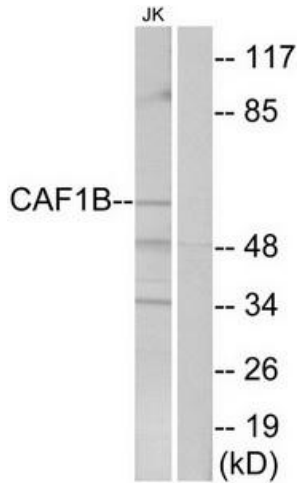
Product data:

| | |
|------------------------------|--|
| Product Type: | Primary Antibodies |
| Applications: | WB |
| Recommended Dilution: | WB: 1:500~1:3000, ELISA: 1:20000 |
| Reactivity: | Human, Mouse, Rat |
| Host: | Rabbit |
| Isotype: | IgG |
| Clonality: | Polyclonal |
| Immunogen: | The antiserum was produced against synthesized peptide derived from internal of human CAF1B. |
| Formulation: | Phosphate buffered saline (without Mg ²⁺ and Ca ²⁺), pH 7.4, 150mM NaCl, 0.02% sodium azide and 50% glycerol. |
| Concentration: | lot specific |
| Purification: | The antibody was affinity-purified from rabbit antiserum by affinity-chromatography using epitope-specific immunogen. |
| Conjugation: | Unconjugated |
| Storage: | Store at -20°C as received. |
| Stability: | Stable for 12 months from date of receipt. |
| Gene Name: | chromatin assembly factor 1 subunit B |
| Database Link: | NP_005432 Entrez Gene 110749 MouseEntrez Gene 288242 RatEntrez Gene 8208 Human Q13112 |
| Synonyms: | CAF-1; CAF-IP60; CAF1; CAF1A; CAF1P60; MPHOSPH7; MPP7 |
| Note: | CAF1B antibody detects endogenous levels of total CAF1B protein. |
| Protein Families: | Druggable Genome, Transcription Factors |

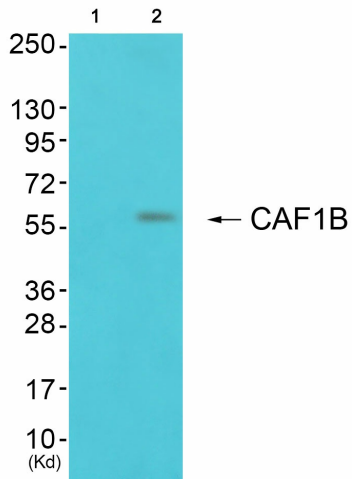


[View online »](#)

Product images:



Western blot analysis of extracts from Jurkat cells, using CAF1B antibody. The lane on the right is treated with the synthesized peptide.



Western blot analysis of extracts from 3T3 cells (Lane 2), using CAF1B Antibody. The lane on the left is treated with synthesized peptide.