

Product datasheet for **TA312228**

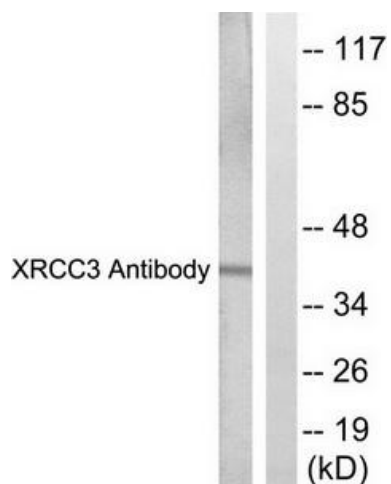
XRCC3 Rabbit Polyclonal Antibody

Product data:

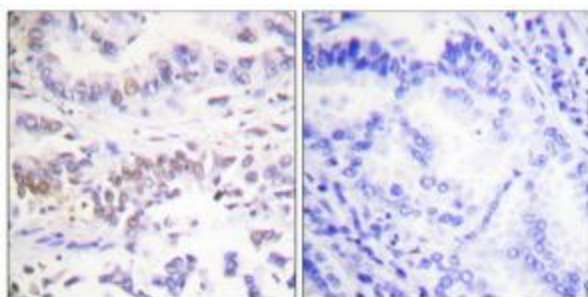
Product Type:	Primary Antibodies
Applications:	IHC, WB
Recommended Dilution:	WB: 1:500~1:3000, IHC: 1:50~1:100, ELISA: 1:5000
Reactivity:	Human
Host:	Rabbit
Isotype:	IgG
Clonality:	Polyclonal
Immunogen:	The antiserum was produced against synthesized peptide derived from Internal of human XRCC3.
Formulation:	Phosphate buffered saline (without Mg ²⁺ and Ca ²⁺), pH 7.4, 150mM NaCl, 0.02% sodium azide and 50% glycerol.
Concentration:	lot specific
Purification:	The antibody was affinity-purified from rabbit antiserum by affinity-chromatography using epitope-specific immunogen.
Conjugation:	Unconjugated
Storage:	Store at -20°C as received.
Stability:	Stable for 12 months from date of receipt.
Gene Name:	X-ray repair complementing defective repair in Chinese hamster cells 3
Database Link:	NP_005423 Entrez Gene 7517 Human O43542
Synonyms:	CMM6
Note:	XRCC3 antibody detects endogenous levels of total XRCC3 protein.
Protein Families:	Druggable Genome
Protein Pathways:	Homologous recombination



[View online »](#)

Product images:

Western blot analysis of extracts from HepG2 cells, treated with Adriamycin (0.5uM, 5hours), using XRCC3 antibody. The lane on the right is treated with the synthesized peptide.



Immunohistochemistry analysis of paraffin-embedded human lung carcinoma tissue using XRCC3 antibody. The picture on the right is treated with the synthesized peptide.