

## Product datasheet for **TA312227**

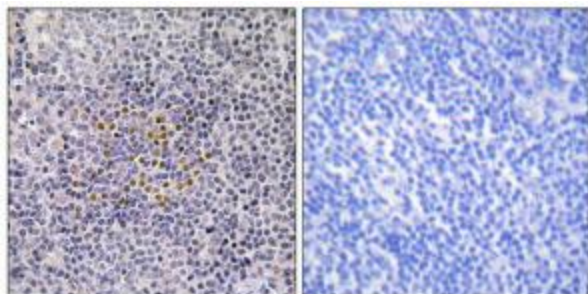
### XRCC3 Rabbit Polyclonal Antibody

#### Product data:

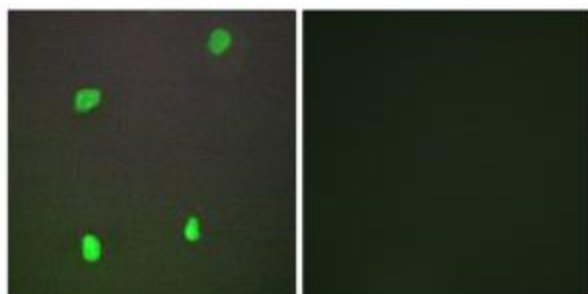
Product Type:	Primary Antibodies
Applications:	IF, IHC
Recommended Dilution:	IHC: 1:50~1:100, IF: 1:100~1:500, ELISA: 1:20000
Reactivity:	Human
Host:	Rabbit
Isotype:	IgG
Clonality:	Polyclonal
Immunogen:	The antiserum was produced against synthesized peptide derived from internal of human XRCC3.
Formulation:	Phosphate buffered saline (without Mg <sup>2+</sup> and Ca <sup>2+</sup> ), pH 7.4, 150mM NaCl, 0.02% sodium azide and 50% glycerol.
Concentration:	lot specific
Purification:	The antibody was affinity-purified from rabbit antiserum by affinity-chromatography using epitope-specific immunogen.
Conjugation:	Unconjugated
Storage:	Store at -20°C as received.
Stability:	Stable for 12 months from date of receipt.
Gene Name:	X-ray repair complementing defective repair in Chinese hamster cells 3
Database Link:	<a href="#">NP_005423</a> <a href="#">Entrez Gene 7517 Human</a> <a href="#">O43542</a>
Synonyms:	CMM6
Note:	XRCC3 antibody detects endogenous levels of total XRCC3 protein.
Protein Families:	Druggable Genome
Protein Pathways:	Homologous recombination



[View online »](#)

**Product images:**

Immunohistochemistry analysis of paraffin-embedded human tonsil tissue using XRCC3 antibody. The picture on the right is treated with the synthesized peptide.



Immunofluorescence analysis of COS-7 cells, using XRCC3 antibody. The picture on the right is treated with the synthesized peptide.