

Product datasheet for **TA312219**

LCK Rabbit Polyclonal Antibody

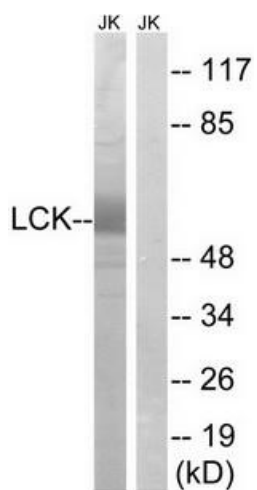
Product data:

Product Type:	Primary Antibodies
Applications:	WB
Recommended Dilution:	WB: 1:500~1:3000, ELISA: 1:40000
Reactivity:	Human, Mouse, Rat
Host:	Rabbit
Isotype:	IgG
Clonality:	Polyclonal
Immunogen:	The antiserum was produced against synthesized non-phosphopeptide derived from human LCK around the phosphorylation site of serine 59 (P-A-SP-P-L).
Formulation:	Phosphate buffered saline (without Mg ²⁺ and Ca ²⁺), pH 7.4, 150mM NaCl, 0.02% sodium azide and 50% glycerol.
Concentration:	lot specific
Purification:	The antibody was affinity-purified from rabbit antiserum by affinity-chromatography using epitope-specific immunogen.
Conjugation:	Unconjugated
Storage:	Store at -20°C as received.
Stability:	Stable for 12 months from date of receipt.
Gene Name:	LCK proto-oncogene, Src family tyrosine kinase
Database Link:	NP_005347 Entrez Gene 16818 MouseEntrez Gene 313050 RatEntrez Gene 3932 Human P06239
Synonyms:	IMD22; LSK; p56lck; pp58lck; YT16
Note:	LCK (Ab-59) antibody detects endogenous levels of total LCK protein.
Protein Families:	Druggable Genome, Protein Kinase, Stem cell - Pluripotency
Protein Pathways:	Natural killer cell mediated cytotoxicity, Primary immunodeficiency, T cell receptor signaling pathway



[View online »](#)

Product images:



Western blot analysis of extracts from Jurkat cells, using LCK (Ab-59) antibody. The lane on the right is treated with the synthesized peptide.