

Product datasheet for **TA312213**

c Fos (FOS) Rabbit Polyclonal Antibody

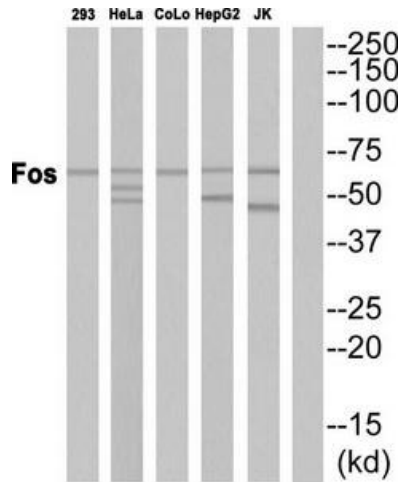
Product data:

Product Type:	Primary Antibodies
Applications:	IHC, WB
Recommended Dilution:	WB: 1:500~1:3000, IHC: 1:50~1:100, ELISA: 1:10000
Reactivity:	Human, Mouse, Rat
Host:	Rabbit
Isotype:	IgG
Clonality:	Polyclonal
Immunogen:	The antiserum was produced against synthesized peptide derived from human Fos.
Formulation:	Phosphate buffered saline (without Mg ²⁺ and Ca ²⁺), pH 7.4, 150mM NaCl, 0.02% sodium azide and 50% glycerol.
Concentration:	lot specific
Purification:	The antibody was affinity-purified from rabbit antiserum by affinity-chromatography using epitope-specific immunogen.
Conjugation:	Unconjugated
Storage:	Store at -20°C as received.
Stability:	Stable for 12 months from date of receipt.
Gene Name:	Fos proto-oncogene, AP-1 transcription factor subunit
Database Link:	NP_005243 Entrez Gene 14281 Mouse Entrez Gene 314322 Rat Entrez Gene 2353 Human P01100
Synonyms:	AP-1; C-FOS; p55
Note:	Fos antibody detects endogenous levels of total Fos protein.
Protein Families:	Druggable Genome, Transcription Factors
Protein Pathways:	B cell receptor signaling pathway, Colorectal cancer, MAPK signaling pathway, Pathways in cancer, T cell receptor signaling pathway, Toll-like receptor signaling pathway

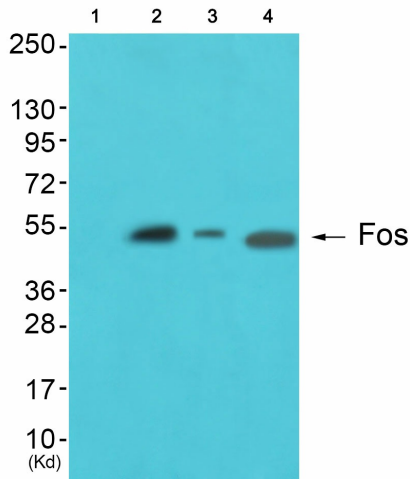


[View online »](#)

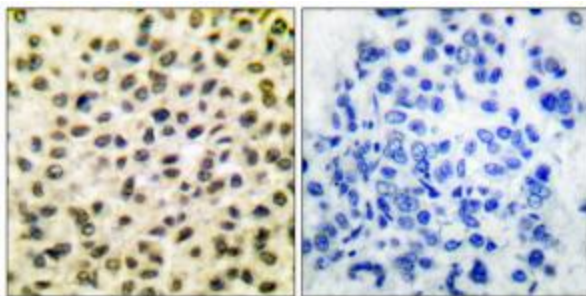
Product images:



Western blot analysis of extracts from HepG2 cells, using Fos antibody (#TA312213).The lane on the right is treated with the synthesized peptide.



Western blot analysis of extracts from A549 cells (Lane 2), HeLa cells (Lane 3) and JK cells (Lane 4), using Fos Antibody. The lane on the left is treated with synthesized peptide.



Immunohistochemical analysis of paraffin-embedded human breast carcinoma tissue using Fos antibody (#TA312213).The picture on the right is treated with the synthesized peptide.