

## Product datasheet for TA312212

### c Fos (FOS) Rabbit Polyclonal Antibody

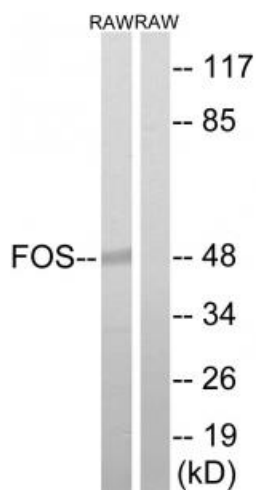
#### Product data:

Product Type:	Primary Antibodies
Applications:	WB
Recommended Dilution:	WB: 1:500~1:3000, ELISA: 1:5000
Reactivity:	Human, Mouse, Rat
Host:	Rabbit
Isotype:	IgG
Clonality:	Polyclonal
Immunogen:	The antiserum was produced against synthesized non-phosphopeptide derived from human FOS around the phosphorylation site of threonine 232 (V-A-TP-P-E).
Formulation:	Phosphate buffered saline (without Mg <sup>2+</sup> and Ca <sup>2+</sup> ), pH 7.4, 150mM NaCl, 0.02% sodium azide and 50% glycerol.
Concentration:	lot specific
Purification:	The antibody was affinity-purified from rabbit antiserum by affinity-chromatography using epitope-specific immunogen.
Conjugation:	Unconjugated
Storage:	Store at -20°C as received.
Stability:	Stable for 12 months from date of receipt.
Gene Name:	Fos proto-oncogene, AP-1 transcription factor subunit
Database Link:	<a href="#">NP_005243</a> <a href="#">Entrez Gene 14281 Mouse</a> <a href="#">Entrez Gene 314322 Rat</a> <a href="#">Entrez Gene 2353 Human</a> <a href="#">P01100</a>
Synonyms:	AP-1; C-FOS; p55
Note:	FOS (Ab-232) antibody detects endogenous levels of total FOS protein.
Protein Families:	Druggable Genome, Transcription Factors
Protein Pathways:	B cell receptor signaling pathway, Colorectal cancer, MAPK signaling pathway, Pathways in cancer, T cell receptor signaling pathway, Toll-like receptor signaling pathway



[View online »](#)

## Product images:



Western blot analysis of extracts from RAW264.7 cells, using FOS (Ab-232) antibody. The lane on the right is treated with the synthesized peptide.