

Product datasheet for **TA312207**

FGR Rabbit Polyclonal Antibody

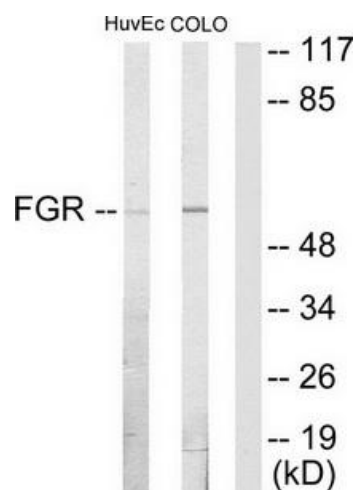
Product data:

Product Type:	Primary Antibodies
Applications:	WB
Recommended Dilution:	WB: 1:500~1:3000, ELISA: 1:5000
Reactivity:	Human, Mouse, Rat
Host:	Rabbit
Isotype:	IgG
Clonality:	Polyclonal
Immunogen:	The antiserum was produced against synthesized peptide derived from internal of human FGR.
Formulation:	Phosphate buffered saline (without Mg ²⁺ and Ca ²⁺), pH 7.4, 150mM NaCl, 0.02% sodium azide and 50% glycerol.
Concentration:	lot specific
Purification:	The antibody was affinity-purified from rabbit antiserum by affinity-chromatography using epitope-specific immunogen.
Conjugation:	Unconjugated
Storage:	Store at -20°C as received.
Stability:	Stable for 12 months from date of receipt.
Gene Name:	FGR proto-oncogene, Src family tyrosine kinase
Database Link:	NP_005239 Entrez Gene 14191 Mouse Entrez Gene 79113 Rat Entrez Gene 2268 Human P09769
Synonyms:	c-fgr; c-src2; p55-Fgr; p55c-fgr; p58-Fgr; p58c-fgr; SRC2
Note:	FGR antibody detects endogenous levels of total FGR protein.
Protein Families:	Druggable Genome, Protein Kinase
Protein Pathways:	Chemokine signaling pathway



[View online »](#)

Product images:



Western blot analysis of extracts from HUVEC cells and COLO205 cells, using FGR antibody. The lane on the right is treated with the synthesized peptide.