

## Product datasheet for **TA312202**

### DLX5 Rabbit Polyclonal Antibody

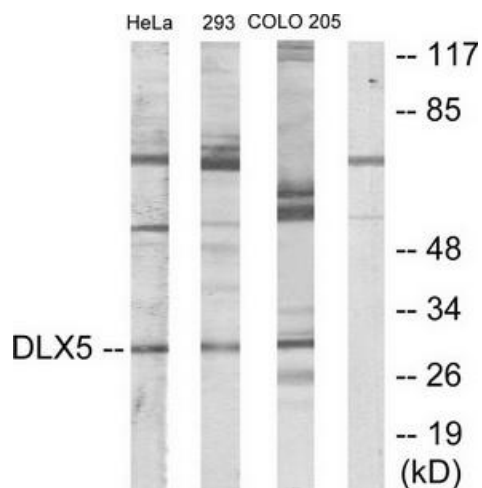
#### Product data:

Product Type:	Primary Antibodies
Applications:	IHC, WB
Recommended Dilution:	WB: 1:500~1:3000, IHC: 1:50~1:100, ELISA: 1:40000
Reactivity:	Human, Mouse, Rat
Host:	Rabbit
Isotype:	IgG
Clonality:	Polyclonal
Immunogen:	The antiserum was produced against synthesized peptide derived from internal of human DLX5.
Formulation:	Phosphate buffered saline (without Mg <sup>2+</sup> and Ca <sup>2+</sup> ), pH 7.4, 150mM NaCl, 0.02% sodium azide and 50% glycerol.
Concentration:	lot specific
Purification:	The antibody was affinity-purified from rabbit antiserum by affinity-chromatography using epitope-specific immunogen.
Conjugation:	Unconjugated
Storage:	Store at -20°C as received.
Stability:	Stable for 12 months from date of receipt.
Gene Name:	distal-less homeobox 5
Database Link:	<a href="#">NP_005212</a> <a href="#">Entrez Gene 13395 MouseEntrez Gene 25431 RatEntrez Gene 1749 Human P56178</a>
Synonyms:	SHFM1D
Note:	DLX5 antibody detects endogenous levels of total DLX5 protein.
Protein Families:	ES Cell Differentiation/IPS, Transcription Factors

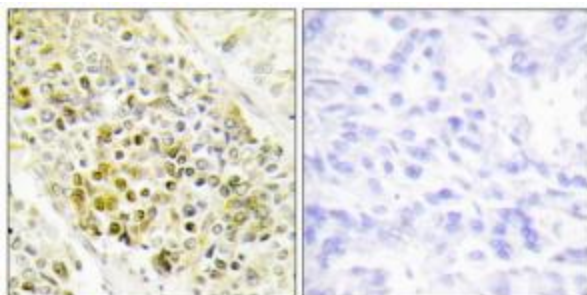


[View online »](#)

## Product images:



Western blot analysis of extracts from HeLa cells, 293 cells and COLO205 cells, using DLX5 antibody. The lane on the right is treated with the synthesized peptide.



Immunohistochemistry analysis of paraffin-embedded human lung carcinoma tissue using DLX5 antibody. The picture on the right is treated with the synthesized peptide.