

Product datasheet for **TA312195**

MCSF Receptor (CSF1R) Rabbit Polyclonal Antibody

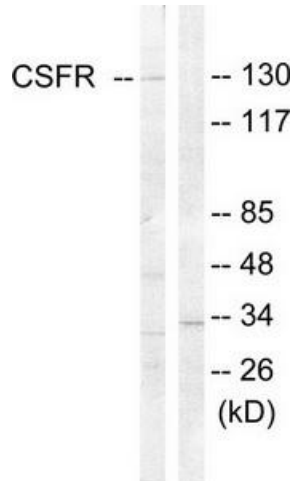
Product data:

Product Type:	Primary Antibodies
Applications:	IF, IHC, WB
Recommended Dilution:	WB: 1:500~1:3000, IHC: 1:50~1:100, IF: 1:100~1:500, ELISA: 1:5000
Reactivity:	Human, Mouse
Host:	Rabbit
Isotype:	IgG
Clonality:	Polyclonal
Immunogen:	The antiserum was produced against synthesized non-phosphopeptide derived from human CSFR around the phosphorylation site of tyrosine 809 (S-N-YP-I-V).
Formulation:	Phosphate buffered saline (without Mg ²⁺ and Ca ²⁺), pH 7.4, 150mM NaCl, 0.02% sodium azide and 50% glycerol.
Concentration:	lot specific
Purification:	The antibody was affinity-purified from rabbit antiserum by affinity-chromatography using epitope-specific immunogen.
Conjugation:	Unconjugated
Storage:	Store at -20°C as received.
Stability:	Stable for 12 months from date of receipt.
Gene Name:	colony stimulating factor 1 receptor
Database Link:	NP_005202 Entrez Gene 12978 Mouse Entrez Gene 1436 Human P07333
Synonyms:	C-FMS; CD115; CSF-1R; CSFR; FIM2; FMS; HDLS; M-CSF-R
Note:	CSFR (Ab-809) antibody detects endogenous levels of total CSFR protein
Protein Families:	Druggable Genome, Protein Kinase, Transmembrane
Protein Pathways:	Cytokine-cytokine receptor interaction, Endocytosis, Hematopoietic cell lineage, Pathways in cancer

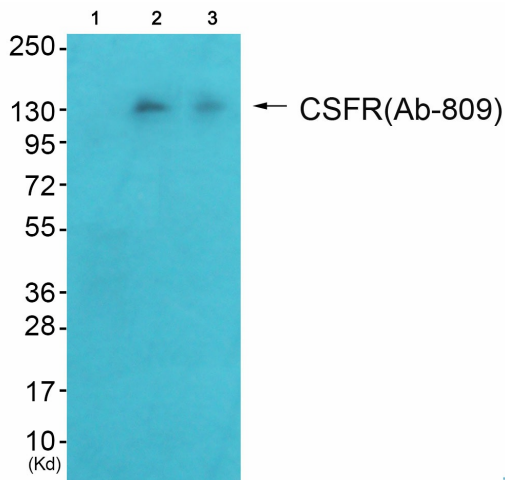


[View online »](#)

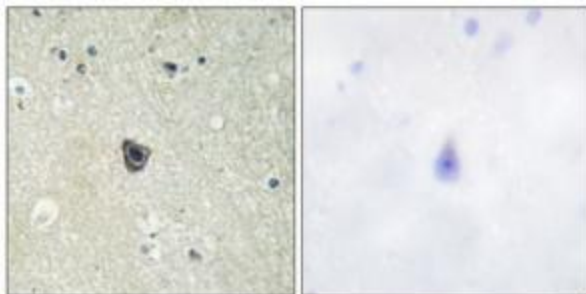
Product images:



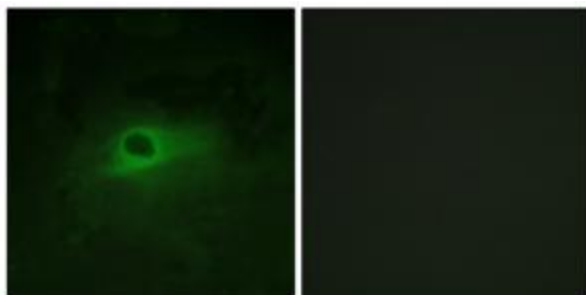
Western blot analysis of extracts from HT-29 cells, using CSFR (Ab-809) antibody. The lane on the right is treated with the synthesized peptide.



Western blot analysis of extracts from HeLa cells (Lane 2) and HepG2 cells (Lane 3), using CSFR (Ab-809) Antibody. The lane on the left is treated with synthesized peptide.



Immunohistochemistry analysis of paraffin-embedded human brain tissue using CSFR (Ab-809) antibody. The picture on the right is treated with the synthesized peptide.



Immunofluorescence analysis of HeLa cells, using CSFR (Ab-809) antibody. The picture on the right is treated with the synthesized peptide.