

## Product datasheet for **TA312193**

### MCSF Receptor (CSF1R) Rabbit Polyclonal Antibody

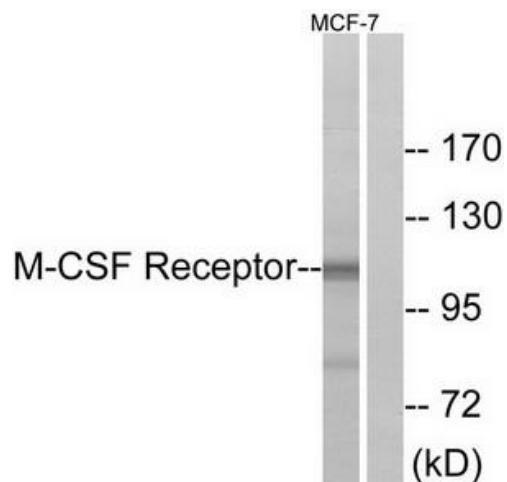
#### Product data:

Product Type:	Primary Antibodies
Applications:	IHC, WB
Recommended Dilution:	WB: 1:500~1:3000, IHC: 1:50~1:100, ELISA: 1:5000
Reactivity:	Human, Mouse
Host:	Rabbit
Isotype:	IgG
Clonality:	Polyclonal
Immunogen:	The antiserum was produced against synthesized non-phosphopeptide derived from human M-CSF Receptor around the phosphorylation site of tyrosine 723 (D-T-YP-V-E).
Formulation:	Phosphate buffered saline (without Mg <sup>2+</sup> and Ca <sup>2+</sup> ), pH 7.4, 150mM NaCl, 0.02% sodium azide and 50% glycerol.
Concentration:	lot specific
Purification:	The antibody was affinity-purified from rabbit antiserum by affinity-chromatography using epitope-specific immunogen.
Conjugation:	Unconjugated
Storage:	Store at -20°C as received.
Stability:	Stable for 12 months from date of receipt.
Gene Name:	colony stimulating factor 1 receptor
Database Link:	<a href="#">NP_005202</a> <a href="#">Entrez Gene 12978 Mouse</a> <a href="#">Entrez Gene 1436 Human</a> <a href="#">P07333</a>
Synonyms:	C-FMS; CD115; CSF-1R; CSFR; FIM2; FMS; HDLS; M-CSF-R
Note:	M-CSF Receptor (Ab-723) antibody detects endogenous levels of total M-CSF Receptor protein.
Protein Families:	Druggable Genome, Protein Kinase, Transmembrane
Protein Pathways:	Cytokine-cytokine receptor interaction, Endocytosis, Hematopoietic cell lineage, Pathways in cancer

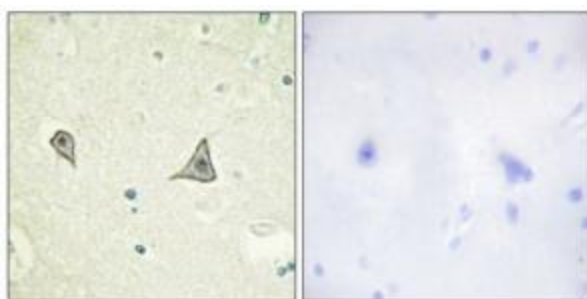


[View online »](#)

## Product images:



Western blot analysis of extracts from MCF-7 cells, using M-CSF Receptor (Ab-723) antibody. The lane on the right is treated with the synthesized peptide.



Immunohistochemistry analysis of paraffin-embedded human brain tissue using M-CSF Receptor (Ab-723) antibody. The picture on the right is treated with the synthesized peptide.