

Product datasheet for **TA312191**

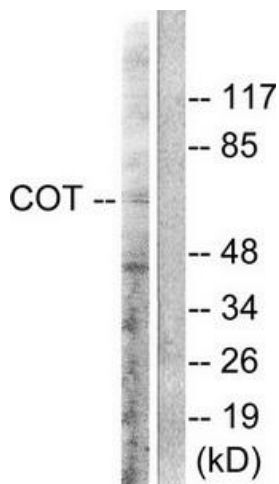
MAP3K8 Rabbit Polyclonal Antibody

Product data:

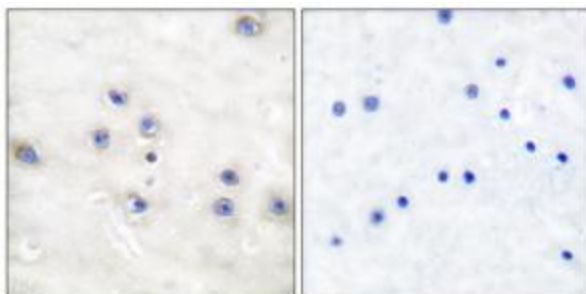
Product Type:	Primary Antibodies
Applications:	IF, IHC, WB
Recommended Dilution:	WB: 1:300~1000, IHC: 1:50~100, IF: 1:100~1:500, ELISA: 1:40000
Reactivity:	Human, Mouse, Rat
Host:	Rabbit
Isotype:	IgG
Clonality:	Polyclonal
Immunogen:	The antiserum was produced against synthesized non-phosphopeptide derived from human COT around the phosphorylation site of threonine 290 (R-G-TP-E-I).
Formulation:	Phosphate buffered saline (without Mg ²⁺ and Ca ²⁺), pH 7.4, 150mM NaCl, 0.02% sodium azide and 50% glycerol.
Concentration:	lot specific
Purification:	The antibody was affinity-purified from rabbit antiserum by affinity-chromatography using epitope-specific immunogen.
Conjugation:	Unconjugated
Storage:	Store at -20°C as received.
Stability:	Stable for 12 months from date of receipt.
Gene Name:	mitogen-activated protein kinase kinase kinase 8
Database Link:	NP_005195 Entrez Gene 26410 Mouse Entrez Gene 116596 Rat Entrez Gene 1326 Human P41279
Synonyms:	AURA2; c-COT; COT; EST; ESTE; MEKK8; Tpl-2; TPL2
Note:	COT (Ab-290) antibody detects endogenous levels of total COT protein.
Protein Families:	Druggable Genome, Protein Kinase
Protein Pathways:	MAPK signaling pathway, T cell receptor signaling pathway, Toll-like receptor signaling pathway



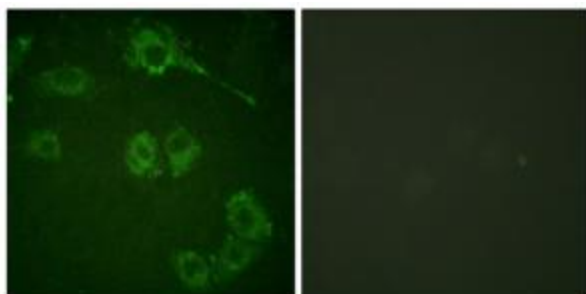
[View online »](#)

Product images:

Western blot analysis of extracts from 293 cells treated with LPS (100ng/ml, 30min), using COT (Ab-290) antibody (#TA312191, Line 1 and 2). The lane on the right is treated with the synthesized peptide.



Immunohistochemical analysis of paraffin-embedded human brain tissue using COT (Ab-290) antibody (#TA312191). The picture on the right is treated with the synthesized peptide.



Immunofluorescence analysis of HuvEc cells, using COT (Ab-290) antibody (#TA312191). The picture on the right is treated with the synthesized peptide.