

## Product datasheet for **TA312189**

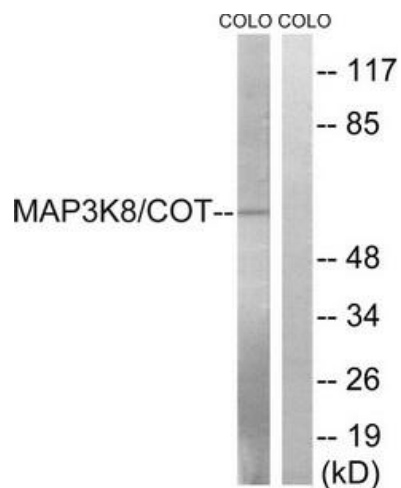
### MAP3K8 Rabbit Polyclonal Antibody

#### Product data:

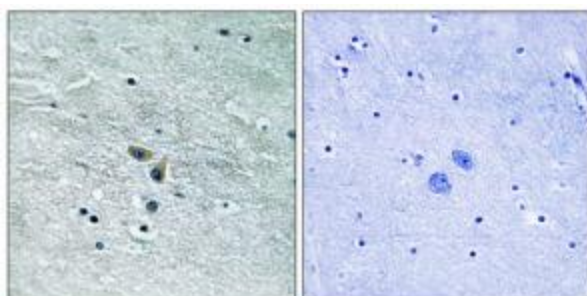
Product Type:	Primary Antibodies
Applications:	IHC, WB
Recommended Dilution:	WB: 1:500~1:3000, IHC: 1:50~1:100, ELISA: 1:5000
Reactivity:	Human, Mouse, Rat
Host:	Rabbit
Isotype:	IgG
Clonality:	Polyclonal
Immunogen:	The antiserum was produced against synthesized non-phosphopeptide derived from human MAP3K8 around the phosphorylation site of serine 400 (C-Q-SP-L-D).
Formulation:	Phosphate buffered saline (without Mg <sup>2+</sup> and Ca <sup>2+</sup> ), pH 7.4, 150mM NaCl, 0.02% sodium azide and 50% glycerol.
Concentration:	lot specific
Purification:	The antibody was affinity-purified from rabbit antiserum by affinity-chromatography using epitope-specific immunogen.
Conjugation:	Unconjugated
Storage:	Store at -20°C as received.
Stability:	Stable for 12 months from date of receipt.
Gene Name:	mitogen-activated protein kinase kinase kinase 8
Database Link:	<a href="#">NP_005195</a> <a href="#">Entrez Gene 26410 Mouse</a> <a href="#">Entrez Gene 116596 Rat</a> <a href="#">Entrez Gene 1326 Human</a> <a href="#">P41279</a>
Synonyms:	AURA2; c-COT; COT; EST; ESTE; MEKK8; Tpl-2; TPL2
Note:	MAP3K8 (Ab-400) antibody detects endogenous levels of total MAP3K8 protein.
Protein Families:	Druggable Genome, Protein Kinase
Protein Pathways:	MAPK signaling pathway, T cell receptor signaling pathway, Toll-like receptor signaling pathway



[View online »](#)

**Product images:**


Western blot analysis of extracts from COLO cells, treated with Insulin (0.01U/ml, 15mins), using MAP3K8 (Ab-400) antibody. The lane on the right is treated with the synthesized peptide.



Immunohistochemistry analysis of paraffin-embedded human brain tissue using MAP3K8 (Ab-400) antibody. The picture on the right is treated with the synthesized peptide.