

Product datasheet for **TA312188**

ATF1 Rabbit Polyclonal Antibody

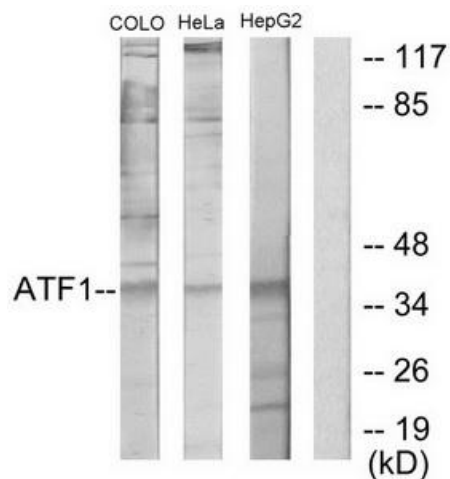
Product data:

| | |
|-----------------------|--|
| Product Type: | Primary Antibodies |
| Applications: | IF, WB |
| Recommended Dilution: | WB: 1:500~1:3000, IF: 1:100~1:500, ELISA: 1:5000 |
| Reactivity: | Human, Mouse, Rat |
| Host: | Rabbit |
| Isotype: | IgG |
| Clonality: | Polyclonal |
| Immunogen: | The antiserum was produced against synthesized peptide derived from internal of human ATF1. |
| Formulation: | Phosphate buffered saline (without Mg ²⁺ and Ca ²⁺), pH 7.4, 150mM NaCl, 0.02% sodium azide and 50% glycerol. |
| Concentration: | lot specific |
| Purification: | The antibody was affinity-purified from rabbit antiserum by affinity-chromatography using epitope-specific immunogen. |
| Conjugation: | Unconjugated |
| Storage: | Store at -20°C as received. |
| Stability: | Stable for 12 months from date of receipt. |
| Gene Name: | activating transcription factor 1 |
| Database Link: | NP_005162 Entrez Gene 11908 MouseEntrez Gene 315305 RatEntrez Gene 466 Human P18846 |
| Synonyms: | ATF-1; EWS-ATF1; FUS; TREB36 |
| Note: | ATF1 antibody detects endogenous levels of total ATF1 protein. |
| Protein Families: | Druggable Genome, Transcription Factors |

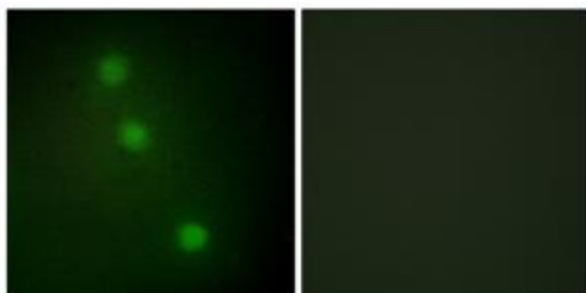


[View online »](#)

Product images:



Western blot analysis of extracts from COLO205 cells, HeLa cells and HepG2 cells, using ATF1 antibody. The lane on the right is treated with the synthesized peptide.



Immunofluorescence analysis of HUVEC cells, using ATF1 antibody. The picture on the right is treated with the synthesized peptide.