

Product datasheet for **TA312182**

PPAR alpha (PPARA) Rabbit Polyclonal Antibody

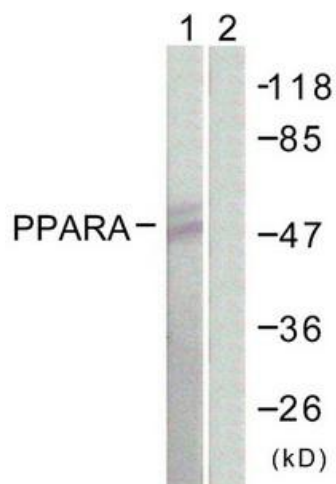
Product data:

Product Type:	Primary Antibodies
Applications:	IF, WB
Recommended Dilution:	WB: 1:500~1:3000, IF: 1:100~1:500, ELISA: 1:1000
Reactivity:	Human
Host:	Rabbit
Isotype:	IgG
Clonality:	Polyclonal
Immunogen:	The antiserum was produced against synthesized non-phosphopeptide derived from human PPAR a around the phosphorylation site of serine 21 (L-E-SP-P-L).
Formulation:	Phosphate buffered saline (without Mg ²⁺ and Ca ²⁺), pH 7.4, 150mM NaCl, 0.02% sodium azide and 50% glycerol.
Concentration:	lot specific
Purification:	The antibody was affinity-purified from rabbit antiserum by affinity-chromatography using epitope-specific immunogen.
Conjugation:	Unconjugated
Storage:	Store at -20°C as received.
Stability:	Stable for 12 months from date of receipt.
Gene Name:	peroxisome proliferator activated receptor alpha
Database Link:	NP_005027 Entrez Gene 5465 Human Q07869
Synonyms:	hPPAR; NR1C1; PPAR; PPARalpha
Note:	PPAR . (Ab-21) antibody detects endogenous levels of total PPAR . protein
Protein Families:	Druggable Genome, Nuclear Hormone Receptor, Transcription Factors
Protein Pathways:	Adipocytokine signaling pathway, PPAR signaling pathway

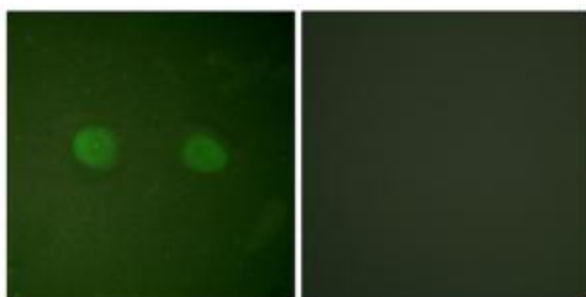


[View online »](#)

Product images:



Western blot analysis of extracts from NIH/3T3 cells, using PPAR a (Ab-21) antibody. The lane on the right is treated with the synthesized peptide.



Immunofluorescence analysis of HeLa cells, using PPAR a (Ab-21) antibody. The picture on the right is treated with the synthesized peptide.