

Product datasheet for **TA312180**

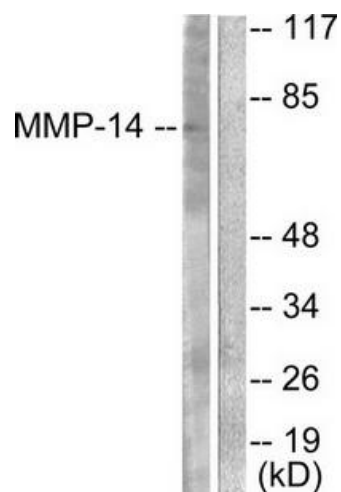
MMP14 Rabbit Polyclonal Antibody

Product data:

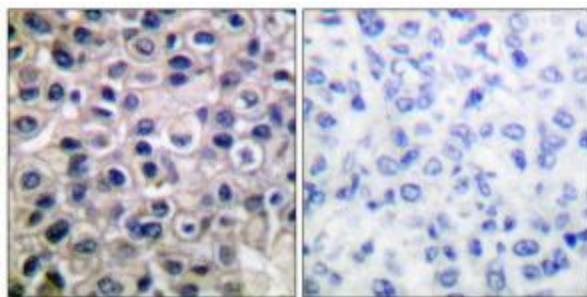
Product Type:	Primary Antibodies
Applications:	IHC, WB
Recommended Dilution:	WB: 1:500~1:3000, IHC: 1:50~1:100, ELISA: 1:5000
Reactivity:	Human, Mouse, Rat
Host:	Rabbit
Isotype:	IgG
Clonality:	Polyclonal
Immunogen:	The antiserum was produced against synthesized peptide derived from human MMP-14.
Formulation:	Phosphate buffered saline (without Mg ²⁺ and Ca ²⁺), pH 7.4, 150mM NaCl, 0.02% sodium azide and 50% glycerol.
Concentration:	lot specific
Purification:	The antibody was affinity-purified from rabbit antiserum by affinity-chromatography using epitope-specific immunogen.
Conjugation:	Unconjugated
Storage:	Store at -20°C as received.
Stability:	Stable for 12 months from date of receipt.
Gene Name:	matrix metalloproteinase 14
Database Link:	NP_004986 Entrez Gene 17387 Mouse Entrez Gene 81707 Rat Entrez Gene 4323 Human P50281
Synonyms:	MMP-14; MMP-X1; MT-MMP; MT-MMP 1; MT1-MMP; MT1MMP; MTMMP1; WNCHRS
Note:	MMP-14 antibody detects endogenous levels of total MMP-14 protein.
Protein Families:	Druggable Genome, Protease, Transmembrane
Protein Pathways:	GnRH signaling pathway



[View online »](#)

Product images:

Western blot analysis of extracts from NIH/3T3 cells, using MMP-14 antibody (#TA312180). The lane on the right is treated with the synthesized peptide.



Immunohistochemical analysis of paraffin-embedded human breast carcinoma tissue using MMP-14 antibody (#TA312180). The picture on the right is treated with the synthesized peptide.