

## Product datasheet for **TA312178**

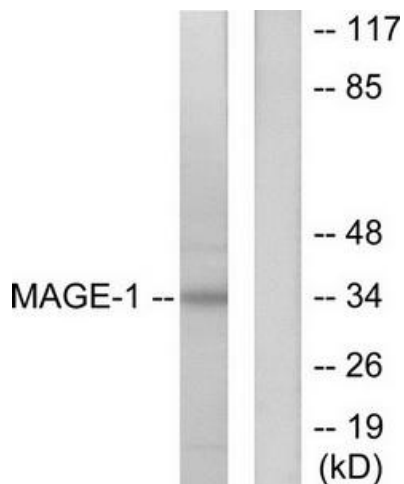
### **MAGE 1 (MAGEA1) Rabbit Polyclonal Antibody**

#### **Product data:**

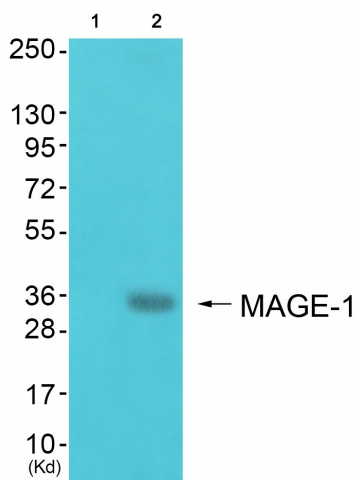
<b>Product Type:</b>	Primary Antibodies
<b>Applications:</b>	IHC, WB
<b>Recommended Dilution:</b>	WB: 1:500~1:3000, IHC: 1:50~1:100, ELISA: 1:10000
<b>Reactivity:</b>	Human
<b>Host:</b>	Rabbit
<b>Isotype:</b>	IgG
<b>Clonality:</b>	Polyclonal
<b>Immunogen:</b>	The antiserum was produced against synthesized peptide derived from human MAGE-1.
<b>Formulation:</b>	Phosphate buffered saline (without Mg <sup>2+</sup> and Ca <sup>2+</sup> ), pH 7.4, 150mM NaCl, 0.02% sodium azide and 50% glycerol.
<b>Concentration:</b>	lot specific
<b>Purification:</b>	The antibody was affinity-purified from rabbit antiserum by affinity-chromatography using epitope-specific immunogen.
<b>Conjugation:</b>	Unconjugated
<b>Storage:</b>	Store at -20°C as received.
<b>Stability:</b>	Stable for 12 months from date of receipt.
<b>Gene Name:</b>	MAGE family member A1
<b>Database Link:</b>	<a href="#">NP_004979</a> <a href="#">Entrez Gene 4100 Human P43355</a>
<b>Synonyms:</b>	CT1.1; MAGE1
<b>Note:</b>	MAGE-1 antibody detects endogenous levels of total MAGE-1 protein.



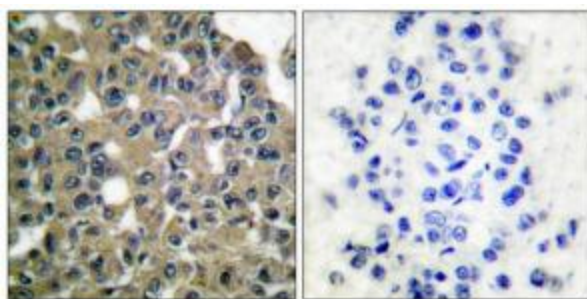
[View online »](#)

**Product images:**


Western blot analysis of extracts from HepG2 cells, using MAGE-1 antibody (#TA312178).The lane on the right is treated with the synthesized peptide.



Western blot analysis of extracts from HepG2 cells (Lane 2), using MAGE-1 Antibody. The lane on the left is treated with synthesized peptide.



Immunohistochemical analysis of paraffin-embedded human breast carcinoma tissue using MAGE-1 antibody (#TA312178).The picture on the right is treated with the synthesized peptide.