

Product datasheet for **TA312176**

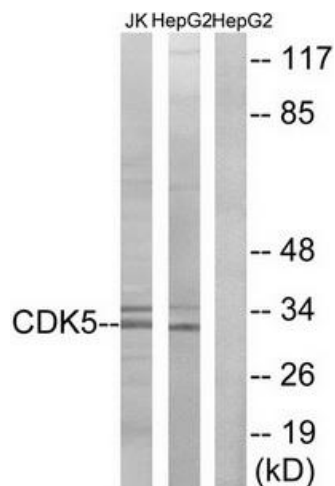
CDK5 Rabbit Polyclonal Antibody

Product data:

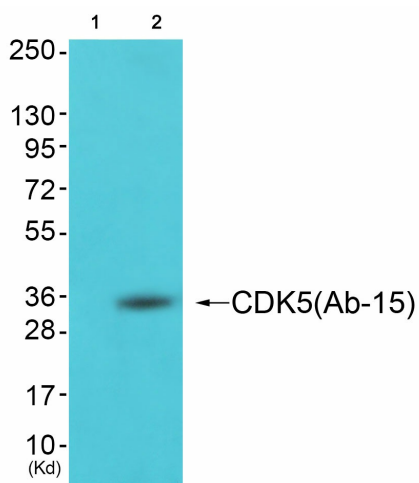
Product Type:	Primary Antibodies
Applications:	IHC, WB
Recommended Dilution:	WB: 1:500~1:3000, IHC: 1:50~1:100, ELISA: 1:5000
Reactivity:	Human, Mouse, Rat
Host:	Rabbit
Isotype:	IgG
Clonality:	Polyclonal
Immunogen:	The antiserum was produced against synthesized non-phosphopeptide derived from human CDK5 around the phosphorylation site of tyrosine 15 (G-T-YP-G-T)
Formulation:	Phosphate buffered saline (without Mg ²⁺ and Ca ²⁺), pH 7.4, 150mM NaCl, 0.02% sodium azide and 50% glycerol.
Concentration:	lot specific
Purification:	The antibody was affinity-purified from rabbit antiserum by affinity-chromatography using epitope-specific immunogen.
Conjugation:	Unconjugated
Storage:	Store at -20°C as received.
Stability:	Stable for 12 months from date of receipt.
Gene Name:	cyclin-dependent kinase 5
Database Link:	NP_004926 Entrez Gene 12568 Mouse Entrez Gene 140908 Rat Entrez Gene 1020 Human Q00535
Synonyms:	PSSALRE
Note:	CDK5 (Ab-15) antibody detects endogenous levels of total CDK5 protein.
Protein Families:	Druggable Genome, Protein Kinase
Protein Pathways:	Alzheimer's disease, Axon guidance



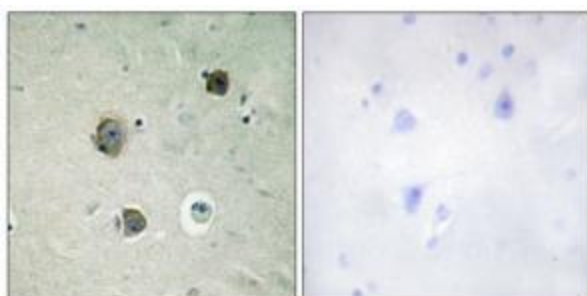
[View online »](#)

Product images:


Western blot analysis of extracts from Jurkat cells and HepG2 cells, using CDK5 (Ab-15) antibody. The lane on the right is treated with the synthesized peptide.



Western blot analysis of extracts from cos-7 cells (Lane 2), using CDK5 (Ab-15) Antibody. The lane on the left is treated with synthesized peptide.



Immunohistochemistry analysis of paraffin-embedded human brain tissue using CDK5 (Ab-15) antibody. The picture on the right is treated with the synthesized peptide.