

## Product datasheet for **TA312168**

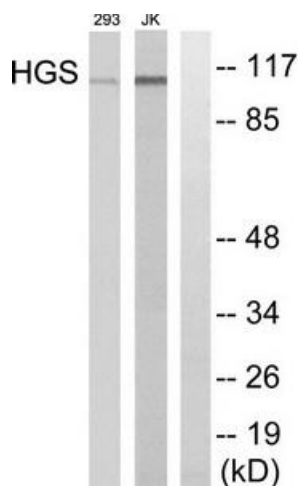
### HGS Rabbit Polyclonal Antibody

#### Product data:

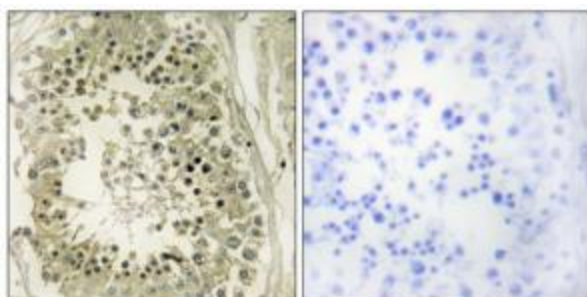
Product Type:	Primary Antibodies
Applications:	IF, IHC, WB
Recommended Dilution:	WB: 1:500~1:3000, IF: 1:100~1:500, IHC: 1:50~1:100, ELISA: 1:40000
Reactivity:	Human, Mouse, Rat
Host:	Rabbit
Isotype:	IgG
Clonality:	Polyclonal
Immunogen:	The antiserum was produced against synthesized peptide derived from internal of human HGS.
Formulation:	Phosphate buffered saline (without Mg <sup>2+</sup> and Ca <sup>2+</sup> ), pH 7.4, 150mM NaCl, 0.02% sodium azide and 50% glycerol.
Concentration:	lot specific
Purification:	The antibody was affinity-purified from rabbit antiserum by affinity-chromatography using epitope-specific immunogen.
Conjugation:	Unconjugated
Storage:	Store at -20°C as received.
Stability:	Stable for 12 months from date of receipt.
Gene Name:	hepatocyte growth factor-regulated tyrosine kinase substrate
Database Link:	<a href="#">NP_004703</a> <a href="#">Entrez Gene 15239 Mouse</a> <a href="#">Entrez Gene 56084 Rat</a> <a href="#">Entrez Gene 9146 Human</a> <a href="#">O14964</a>
Synonyms:	HRS
Note:	HGS antibody detects endogenous levels of total HGS protein.
Protein Families:	Druggable Genome
Protein Pathways:	Endocytosis



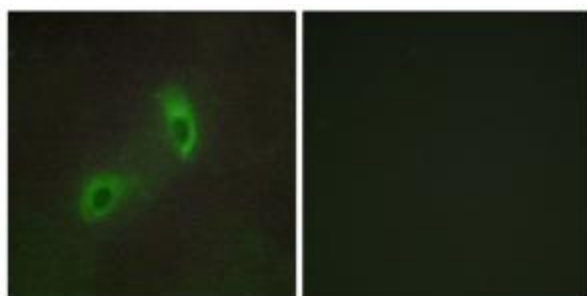
[View online »](#)

**Product images:**


Western blot analysis of extracts from 293 cells and JK cells, using HGS antibody. The lane on the right is treated with the synthesized peptide.



Immunohistochemistry analysis of paraffin-embedded human testis tissue using HGS antibody. The picture on the right is treated with the synthesized peptide.



Immunofluorescence analysis of HUVEC cells, using HGS antibody. The picture on the right is treated with the synthesized peptide.