

Product datasheet for **TA312167**

PIAS2 Rabbit Polyclonal Antibody

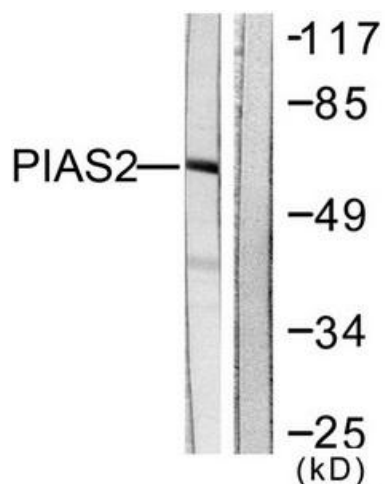
Product data:

Product Type:	Primary Antibodies
Applications:	WB
Recommended Dilution:	WB: 1:500~1:3000, ELISA: 1:20000
Reactivity:	Human, Mouse, Rat
Host:	Rabbit
Isotype:	IgG
Clonality:	Polyclonal
Immunogen:	The antiserum was produced against synthesized peptide derived from Internal of human PIAS2.
Formulation:	Phosphate buffered saline (without Mg ²⁺ and Ca ²⁺), pH 7.4, 150mM NaCl, 0.02% sodium azide and 50% glycerol.
Concentration:	lot specific
Purification:	The antibody was affinity-purified from rabbit antiserum by affinity-chromatography using epitope-specific immunogen.
Conjugation:	Unconjugated
Storage:	Store at -20°C as received.
Stability:	Stable for 12 months from date of receipt.
Gene Name:	protein inhibitor of activated STAT 2
Database Link:	NP_004662 Entrez Gene 17344 MouseEntrez Gene 83422 RatEntrez Gene 9063 Human O75928
Synonyms:	ARIP3; DIP; MIZ; MIZ1; PIASX; PIASX-ALPHA; PIASX-BETA; SIZ2; ZMIZ4
Note:	PIAS2 antibody detects endogenous levels of total PIAS2 protein.
Protein Families:	Stem cell - Pluripotency, Stem cell relevant signaling - JAK/STAT signaling pathway, Transcription Factors
Protein Pathways:	Jak-STAT signaling pathway, Pathways in cancer, Small cell lung cancer, Ubiquitin mediated proteolysis

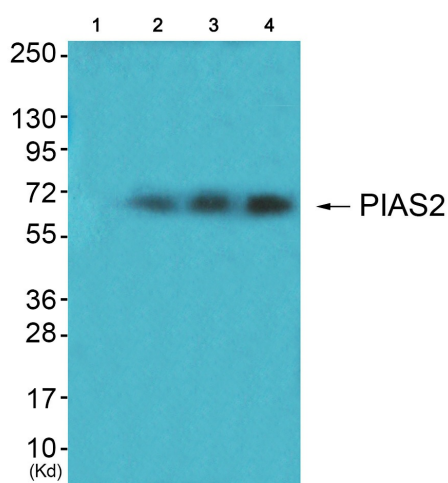


[View online »](#)

Product images:



Western blot analysis of extracts from COS7 cells, using PIAS2 antibody. The lane on the right is treated with the synthesized peptide.



Western blot analysis of extracts from HuvEc cells (Lane 2), JK cells (Lane 3) and cos-7 cells (Lane 4), using PIAS2 Antibody. The lane on the left is treated with synthesized peptide.