

## Product datasheet for **TA312164**

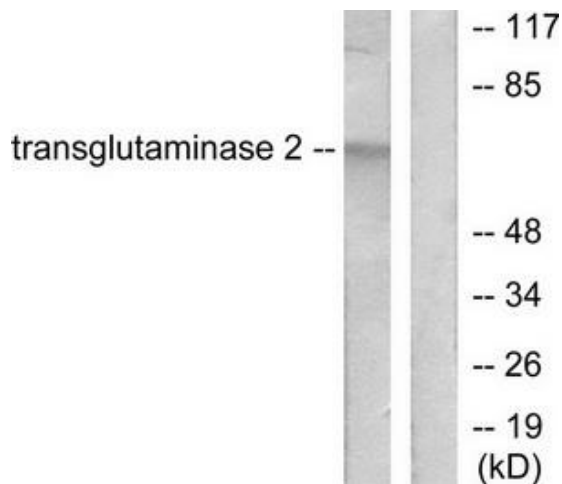
### Transglutaminase 2 (TGM2) Rabbit Polyclonal Antibody

#### Product data:

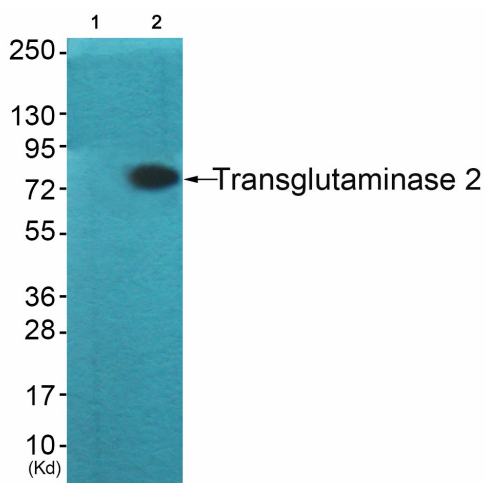
Product Type:	Primary Antibodies
Applications:	IHC, WB
Recommended Dilution:	WB: 1:500~1:3000, IHC: 1:50~1:100, ELISA: 1:5000
Reactivity:	Human, Mouse
Host:	Rabbit
Isotype:	IgG
Clonality:	Polyclonal
Immunogen:	The antiserum was produced against synthesized peptide derived from human Transglutaminase 2 antibody.
Formulation:	Phosphate buffered saline (without Mg <sup>2+</sup> and Ca <sup>2+</sup> ), pH 7.4, 150mM NaCl, 0.02% sodium azide and 50% glycerol.
Concentration:	lot specific
Purification:	The antibody was affinity-purified from rabbit antiserum by affinity-chromatography using epitope-specific immunogen.
Conjugation:	Unconjugated
Storage:	Store at -20°C as received.
Stability:	Stable for 12 months from date of receipt.
Gene Name:	transglutaminase 2
Database Link:	<a href="#">NP_004604</a> <a href="#">Entrez Gene 21817 Mouse</a> <a href="#">Entrez Gene 7052 Human</a> <a href="#">P21980</a>
Synonyms:	G-ALPHA-h; GNAH; HEL-S-45; TG2; TGC
Note:	Transglutaminase 2 antibody detects endogenous levels of total Transglutaminase 2 protein.
Protein Families:	Druggable Genome
Protein Pathways:	Huntington's disease



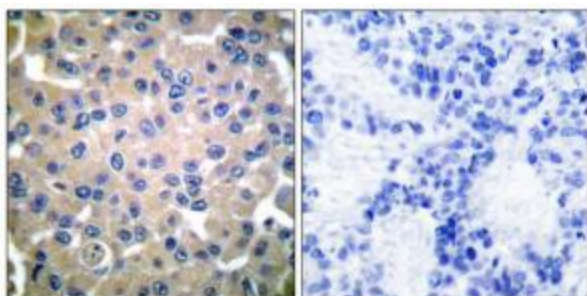
[View online »](#)

**Product images:**


Western blot analysis of extracts from HuvEc cells, using Transglutaminase 2 antibody (#TA312164). The lane on the right is treated with the synthesized peptide.



Western blot analysis of extracts from HuvEc cells (Lane 2), using Transglutaminase 2 Antibody. The lane on the left is treated with synthesized peptide.



Immunohistochemical analysis of paraffin-embedded human breast carcinoma tissue using Transglutaminase 2 antibody (#TA312164). The picture on the right is treated with the synthesized peptide.