

Product datasheet for **TA312162**

MCM2 Rabbit Polyclonal Antibody

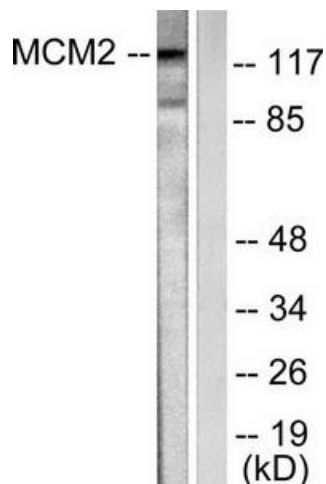
Product data:

Product Type:	Primary Antibodies
Applications:	IHC, WB
Recommended Dilution:	WB: 1:500~1:3000, IHC: 1:50~1:100, IF: 1:100~1:500, ELISA: 1:40000
Reactivity:	Human, Mouse, Rat
Host:	Rabbit
Isotype:	IgG
Clonality:	Polyclonal
Immunogen:	The antiserum was produced against synthesized peptide derived from human MCM2.
Formulation:	Phosphate buffered saline (without Mg ²⁺ and Ca ²⁺), pH 7.4, 150mM NaCl, 0.02% sodium azide and 50% glycerol.
Concentration:	lot specific
Purification:	The antibody was affinity-purified from rabbit antiserum by affinity-chromatography using epitope-specific immunogen.
Conjugation:	Unconjugated
Storage:	Store at -20°C as received.
Stability:	Stable for 12 months from date of receipt.
Gene Name:	minichromosome maintenance complex component 2
Database Link:	NP_004517 Entrez Gene 17216 MouseEntrez Gene 312538 RatEntrez Gene 4171 Human P49736
Synonyms:	BM28; CCNL1; cdc19; CDCL1; D3S3194; MITOTIN
Note:	MCM2 antibody detects endogenous levels of total MCM2 protein.
Protein Families:	Druggable Genome, Stem cell - Pluripotency, Transcription Factors
Protein Pathways:	Cell cycle, DNA replication

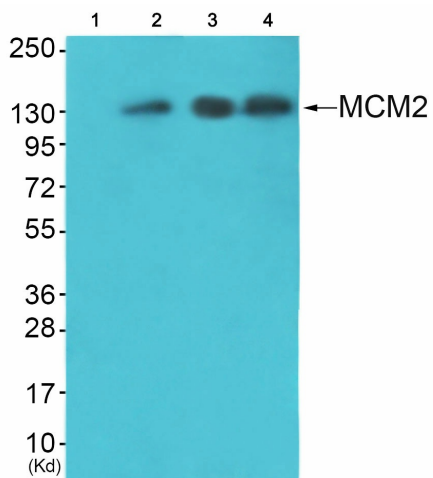


[View online »](#)

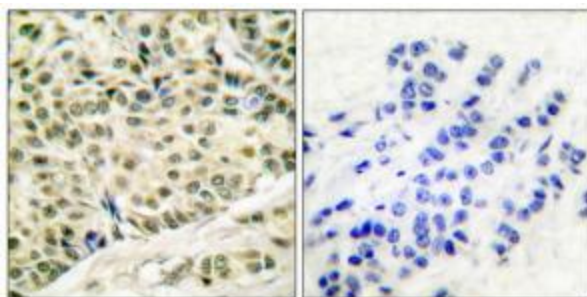
Product images:



Western blot analysis of extracts from 293 cells, using MCM2 antibody (#TA312162).The lane on the right is treated with the synthesized peptide.



Western blot analysis of extracts from 3T3 cells (Lane 2), k562 cells (Lane 3) and HepG2 cells (Lane 4), using MCM2 Antibody. The lane on the left is treated with synthesized peptide.



Immunohistochemical analysis of paraffin-embedded human breast carcinoma tissue using MCM2 antibody (#TA312162).The picture on the right is treated with the synthesized peptide.