

Product datasheet for **TA312157**

Integrin Linked Kinase (ILK) Rabbit Polyclonal Antibody

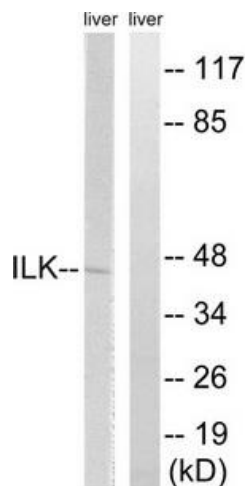
Product data:

Product Type:	Primary Antibodies
Applications:	IHC, WB
Recommended Dilution:	WB: 1:500~1:3000, IHC: 1:50~1:100, ELISA: 1:5000
Reactivity:	Human, Mouse, Rat
Host:	Rabbit
Isotype:	IgG
Clonality:	Polyclonal
Immunogen:	The antiserum was produced against synthesized non-phosphopeptide derived from human ILK around the phosphorylation site of serine 246 (I-F-SP-H-P).
Formulation:	Phosphate buffered saline (without Mg ²⁺ and Ca ²⁺), pH 7.4, 150mM NaCl, 0.02% sodium azide and 50% glycerol.
Concentration:	lot specific
Purification:	The antibody was affinity-purified from rabbit antiserum by affinity-chromatography using epitope-specific immunogen.
Conjugation:	Unconjugated
Storage:	Store at -20°C as received.
Stability:	Stable for 12 months from date of receipt.
Gene Name:	integrin linked kinase
Database Link:	NP_004508 Entrez Gene 16202 MouseEntrez Gene 170922 RatEntrez Gene 3611 Human Q13418
Synonyms:	HEL-S-28; ILK-1; ILK-2; P59; p59ILK
Note:	ILK (Ab-246) antibody detects endogenous levels of total ILK protein.
Protein Families:	Druggable Genome, Protein Kinase
Protein Pathways:	Endometrial cancer, Focal adhesion, PPAR signaling pathway

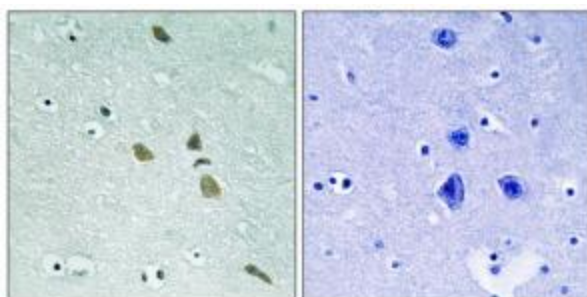


[View online »](#)

Product images:



Western blot analysis of extracts from rat liver cells, using ILK (Ab-246) antibody. The lane on the right is treated with the synthesized peptide.



Immunohistochemistry analysis of paraffin-embedded human brain tissue using ILK (Ab-246) antibody. The picture on the right is treated with the synthesized peptide.