

Product datasheet for **TA312151**

CSK Rabbit Polyclonal Antibody

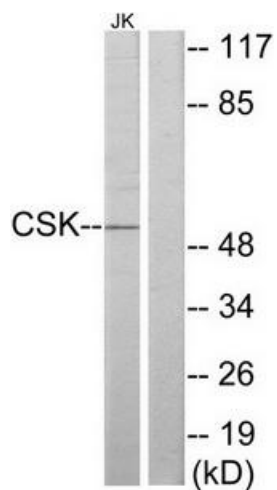
Product data:

Product Type:	Primary Antibodies
Applications:	IF, WB
Recommended Dilution:	WB: 1:500~1:3000, IF: 1:100~1:500, ELISA: 1:5000
Reactivity:	Human, Mouse, Rat
Host:	Rabbit
Isotype:	IgG
Clonality:	Polyclonal
Immunogen:	The antiserum was produced against synthesized peptide derived from internal of human CSK.
Formulation:	Phosphate buffered saline (without Mg ²⁺ and Ca ²⁺), pH 7.4, 150mM NaCl, 0.02% sodium azide and 50% glycerol.
Concentration:	lot specific
Purification:	The antibody was affinity-purified from rabbit antiserum by affinity-chromatography using epitope-specific immunogen.
Conjugation:	Unconjugated
Storage:	Store at -20°C as received.
Stability:	Stable for 12 months from date of receipt.
Gene Name:	c-src tyrosine kinase
Database Link:	NP_004374 Entrez Gene 12988 Mouse Entrez Gene 315707 Rat Entrez Gene 1445 Human P41240
Synonyms:	MGC117393
Note:	CSK antibody detects endogenous levels of total CSK protein.
Protein Families:	Druggable Genome, Protein Kinase
Protein Pathways:	Chemokine signaling pathway, Epithelial cell signaling in Helicobacter pylori infection, Neurotrophin signaling pathway, Regulation of actin cytoskeleton

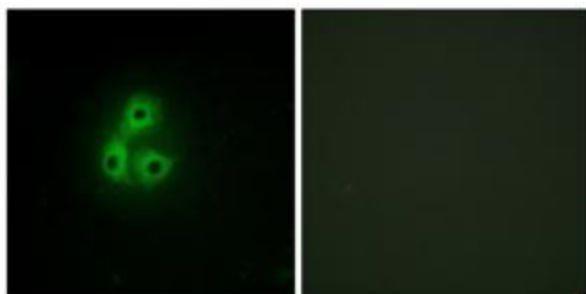


[View online »](#)

Product images:



Western blot analysis of extracts from Jurkat cells, using CSK antibody. The lane on the right is treated with the synthesized peptide.



Immunofluorescence analysis of A549 cells, using CSK antibody. The picture on the right is treated with the synthesized peptide.