

Product datasheet for **TA312148**

Caspase 5 (CASP5) Rabbit Polyclonal Antibody

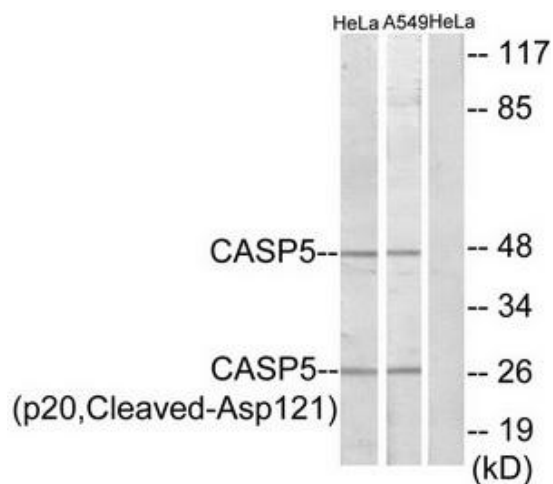
Product data:

Product Type:	Primary Antibodies
Applications:	WB
Recommended Dilution:	WB: 1:500~1:3000, ELISA: 1:20000
Reactivity:	Human
Host:	Rabbit
Isotype:	IgG
Clonality:	Polyclonal
Immunogen:	The antiserum was produced against synthesized peptide derived from human CASP5.
Formulation:	Phosphate buffered saline (without Mg ²⁺ and Ca ²⁺), pH 7.4, 150mM NaCl, 0.02% sodium azide and 50% glycerol.
Concentration:	lot specific
Purification:	The antibody was affinity-purified from rabbit antiserum by affinity-chromatography using epitope-specific immunogen.
Conjugation:	Unconjugated
Storage:	Store at -20°C as received.
Stability:	Stable for 12 months from date of receipt.
Gene Name:	caspase 5
Database Link:	NP_004338 Entrez Gene 838 Human P51878
Synonyms:	ICE(rel)III; ICEREL-III; ICH-3
Note:	CASP5 (p20, Cleaved-Asp121) antibody detects endogenous levels of fragment of activated CASP5 resulting from cleavage adjacent to Asp121.
Protein Families:	Druggable Genome, Protease
Protein Pathways:	NOD-like receptor signaling pathway



[View online »](#)

Product images:



Western blot analysis of extracts from HeLa cells and A549 cells, treated with etoposide (25uM, 24hours), using CASP5 (p20, Cleaved-Asp121) antibody. The lane on the right is treated with the synthesized peptide.