

Product datasheet for **TA312143**

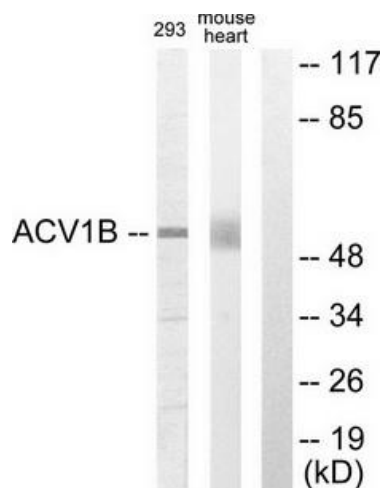
Activin A Receptor Type IB (ACVR1B) Rabbit Polyclonal Antibody

Product data:

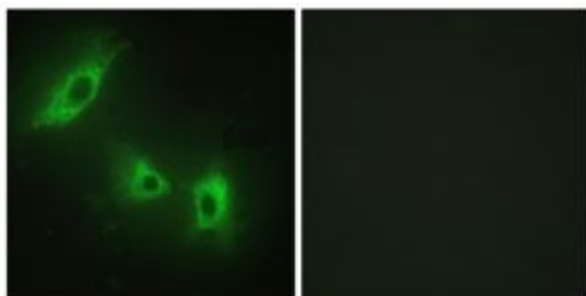
Product Type:	Primary Antibodies
Applications:	IF, WB
Recommended Dilution:	WB: 1:500~1:3000, IF: 1:100~1:500, ELISA: 1:5000
Reactivity:	Human, Mouse, Rat
Host:	Rabbit
Isotype:	IgG
Clonality:	Polyclonal
Immunogen:	The antiserum was produced against synthesized peptide derived from internal of human ACV1B.
Formulation:	Phosphate buffered saline (without Mg ²⁺ and Ca ²⁺), pH 7.4, 150mM NaCl, 0.02% sodium azide and 50% glycerol.
Concentration:	lot specific
Purification:	The antibody was affinity-purified from rabbit antiserum by affinity-chromatography using epitope-specific immunogen.
Conjugation:	Unconjugated
Storage:	Store at -20°C as received.
Stability:	Stable for 12 months from date of receipt.
Gene Name:	activin A receptor type 1B
Database Link:	NP_004293 Entrez Gene 11479 Mouse Entrez Gene 29381 Rat Entrez Gene 91 Human P36896
Synonyms:	ACTRIB; ACVRLK4; ALK4; SKR2
Note:	ACV1B antibody detects endogenous levels of total ACV1B protein.
Protein Families:	Druggable Genome, Protein Kinase, Transmembrane
Protein Pathways:	Adherens junction, Chronic myeloid leukemia, Colorectal cancer, Cytokine-cytokine receptor interaction, Endocytosis, MAPK signaling pathway, Pancreatic cancer, Pathways in cancer, TGF-beta signaling pathway



[View online »](#)

Product images:


Western blot analysis of extracts from 293 cells and mouse liver cells, using ACV1B antibody. The lane on the right is treated with the synthesized peptide.



Immunofluorescence analysis of HeLa cells, using ACV1B antibody. The picture on the right is treated with the synthesized peptide.