

Product datasheet for **TA312141**

PKMYT1 Rabbit Polyclonal Antibody

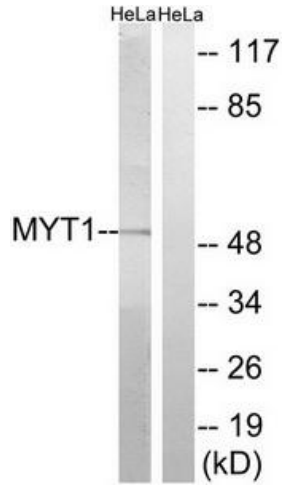
Product data:

| | |
|-----------------------|--|
| Product Type: | Primary Antibodies |
| Applications: | WB |
| Recommended Dilution: | WB: 1:500~1:3000, ELISA: 1:20000 |
| Reactivity: | Human |
| Host: | Rabbit |
| Isotype: | IgG |
| Clonality: | Polyclonal |
| Immunogen: | The antiserum was produced against synthesized non-phosphopeptide derived from human MYT1 around the phosphorylation site of serine 83 (R-V-SP-F-R). |
| Formulation: | Phosphate buffered saline (without Mg ²⁺ and Ca ²⁺), pH 7.4, 150mM NaCl, 0.02% sodium azide and 50% glycerol. |
| Concentration: | lot specific |
| Purification: | The antibody was affinity-purified from rabbit antiserum by affinity-chromatography using epitope-specific immunogen. |
| Conjugation: | Unconjugated |
| Storage: | Store at -20°C as received. |
| Stability: | Stable for 12 months from date of receipt. |
| Gene Name: | protein kinase, membrane associated tyrosine/threonine 1 |
| Database Link: | NP_004194 Entrez Gene 9088 Human Q99640 |
| Synonyms: | MYT1; PPP1R126 |
| Note: | MYT1 (Ab-83) antibody detects endogenous levels of total MYT1 protein. |
| Protein Families: | Druggable Genome, Protein Kinase |
| Protein Pathways: | Cell cycle, Oocyte meiosis, Progesterone-mediated oocyte maturation |

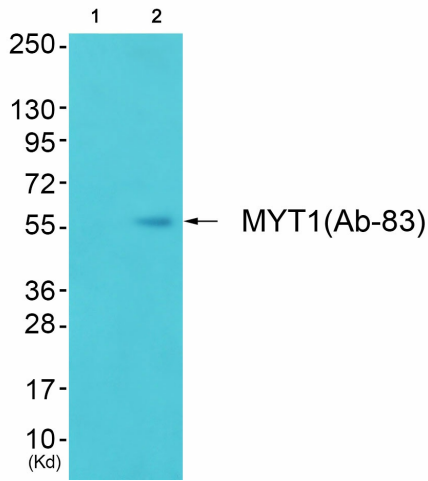


[View online »](#)

Product images:



Western blot analysis of extracts from HeLa cells, using MYT1 (Ab-83) antibody. The lane on the right is treated with the synthesized peptide.



Western blot analysis of extracts from colo cells (Lane 2), using MYT1 (Ab-83) Antibody. The lane on the left is treated with synthesized peptide.