

Product datasheet for **TA312140**

TRIP15 (COPS2) Rabbit Polyclonal Antibody

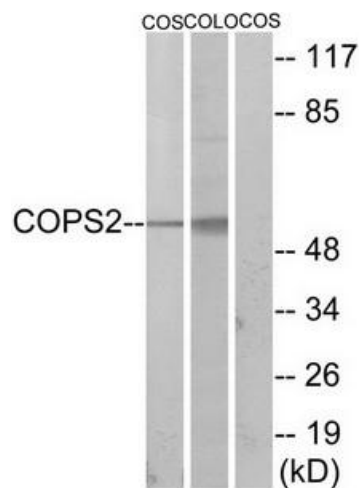
Product data:

Product Type:	Primary Antibodies
Applications:	IF, WB
Recommended Dilution:	WB: 1:500~1:3000, IF: 1:100~1:500, ELISA: 1:20000
Reactivity:	Human, Mouse, Rat
Host:	Rabbit
Isotype:	IgG
Clonality:	Polyclonal
Immunogen:	The antiserum was produced against synthesized peptide derived from internal of human COPS2.
Formulation:	Phosphate buffered saline (without Mg ²⁺ and Ca ²⁺), pH 7.4, 150mM NaCl, 0.02% sodium azide and 50% glycerol.
Concentration:	lot specific
Purification:	The antibody was affinity-purified from rabbit antiserum by affinity-chromatography using epitope-specific immunogen.
Conjugation:	Unconjugated
Storage:	Store at -20°C as received.
Stability:	Stable for 12 months from date of receipt.
Gene Name:	COP9 signalosome subunit 2
Database Link:	NP_004227 Entrez Gene 12848 MouseEntrez Gene 261736 RatEntrez Gene 9318 Human P61201
Synonyms:	ALIEN; CSN2; SGN2; TRIP15
Note:	COPS2 antibody detects endogenous levels of total COPS2 protein.
Protein Families:	Druggable Genome, Transcription Factors

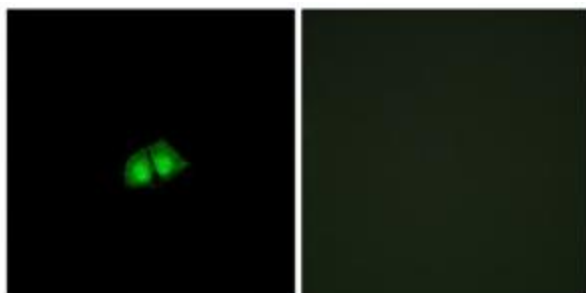


[View online »](#)

Product images:



Western blot analysis of extracts from COS-7 cells and COLO205 cells, using COPS2 antibody. The lane on the right is treated with the synthesized peptide.



Immunofluorescence analysis of A549 cells, using COPS2 antibody. The picture on the right is treated with the synthesized peptide.