

## Product datasheet for **TA312131**

### Granzyme B (GZMB) Rabbit Polyclonal Antibody

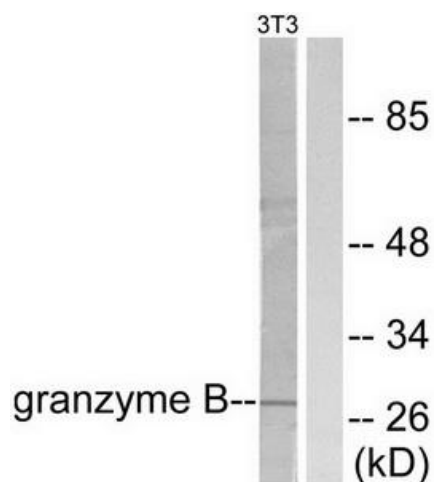
#### Product data:

Product Type:	Primary Antibodies
Applications:	IHC, WB
Recommended Dilution:	WB: 1:500~1:3000, IHC: 1:50~1:100, ELISA: 1:5000
Reactivity:	Human, Mouse, Rat
Host:	Rabbit
Isotype:	IgG
Clonality:	Polyclonal
Immunogen:	The antiserum was produced against synthesized peptide derived from human Granzyme B.
Formulation:	Phosphate buffered saline (without Mg <sup>2+</sup> and Ca <sup>2+</sup> ), pH 7.4, 150mM NaCl, 0.02% sodium azide and 50% glycerol.
Concentration:	lot specific
Purification:	The antibody was affinity-purified from rabbit antiserum by affinity-chromatography using epitope-specific immunogen.
Conjugation:	Unconjugated
Storage:	Store at -20°C as received.
Stability:	Stable for 12 months from date of receipt.
Gene Name:	granzyme B
Database Link:	<a href="#">NP_004122</a> <a href="#">Entrez Gene 14939 Mouse</a> <a href="#">Entrez Gene 171528 Rat</a> <a href="#">Entrez Gene 3002 Human</a> <a href="#">P10144</a>
Synonyms:	C11; CCPI; CGL-1; CGL1; CSP-B; CSPB; CTLA1; CTSL1; HLP; SECT
Note:	Granzyme B antibody detects endogenous levels of total Granzyme B protein.
Protein Families:	Druggable Genome, Protease
Protein Pathways:	Allograft rejection, Autoimmune thyroid disease, Graft-versus-host disease, Natural killer cell mediated cytotoxicity, Type I diabetes mellitus

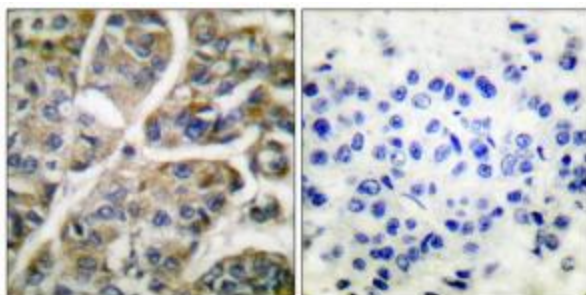


[View online »](#)

## Product images:



Western blot analysis of extracts from NIH/3T3 cells, using Granzyme B antibody (#TA312131). The lane on the right is treated with the synthesized peptide.



Immunohistochemical analysis of paraffin-embedded human breast carcinoma tissue using Granzyme B antibody (#TA312131). The picture on the right is treated with the synthesized peptide.