

Product datasheet for **TA312130**

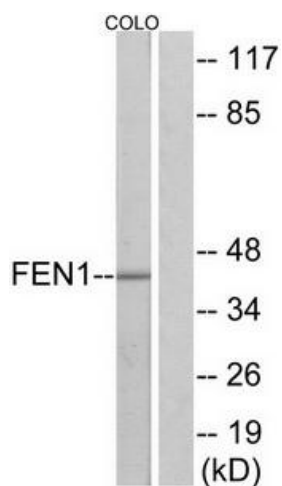
FEN1 Rabbit Polyclonal Antibody

Product data:

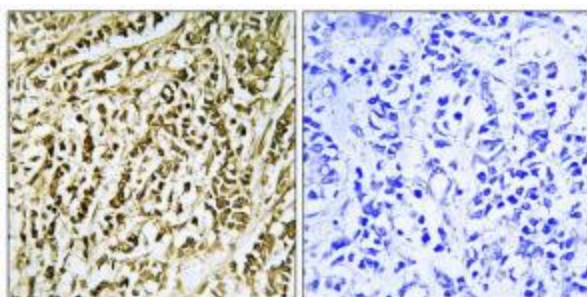
| | |
|-----------------------|--|
| Product Type: | Primary Antibodies |
| Applications: | IF, IHC, WB |
| Recommended Dilution: | WB: 1:500~1:3000, IHC: 1:50~1:100, IF: 1:100~1:500, ELISA: 1:5000 |
| Reactivity: | Human, Mouse, Rat |
| Host: | Rabbit |
| Isotype: | IgG |
| Clonality: | Polyclonal |
| Immunogen: | The antiserum was produced against synthesized peptide derived from internal of human FEN1. |
| Formulation: | Phosphate buffered saline (without Mg ²⁺ and Ca ²⁺), pH 7.4, 150mM NaCl, 0.02% sodium azide and 50% glycerol. |
| Concentration: | lot specific |
| Purification: | The antibody was affinity-purified from rabbit antiserum by affinity-chromatography using epitope-specific immunogen. |
| Conjugation: | Unconjugated |
| Storage: | Store at -20°C as received. |
| Stability: | Stable for 12 months from date of receipt. |
| Gene Name: | flap structure-specific endonuclease 1 |
| Database Link: | NP_004102 Entrez Gene 14156 MouseEntrez Gene 84490 RatEntrez Gene 2237 Human P39748 |
| Synonyms: | FEN-1; MF1; RAD2 |
| Note: | FEN1 antibody detects endogenous levels of total FEN1 protein. |
| Protein Families: | Druggable Genome, Stem cell - Pluripotency |
| Protein Pathways: | Base excision repair, DNA replication, Non-homologous end-joining |



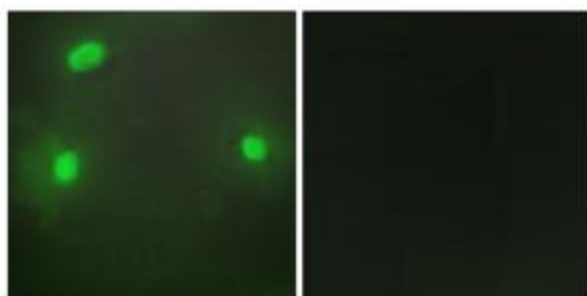
[View online »](#)

Product images:


Western blot analysis of extracts from Jurkat cells, 293 cells and HUVEC cells, using FEN1 antibody. The lane on the right is treated with the synthesized peptide.



Immunohistochemistry analysis of paraffin-embedded human breast carcinoma tissue using FEN1 antibody. The picture on the right is treated with the synthesized peptide.



Immunofluorescence analysis of HeLa cells, using FEN1 antibody. The picture on the right is treated with the synthesized peptide.