

Product datasheet for **TA312122**

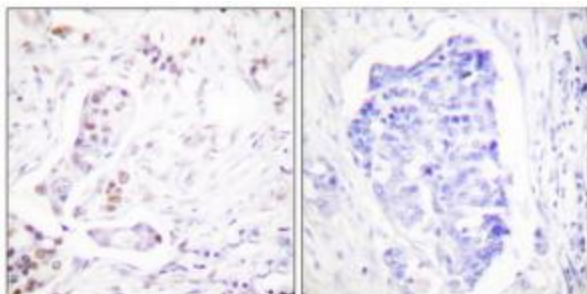
Cyclin A1 (CCNA1) Rabbit Polyclonal Antibody

Product data:

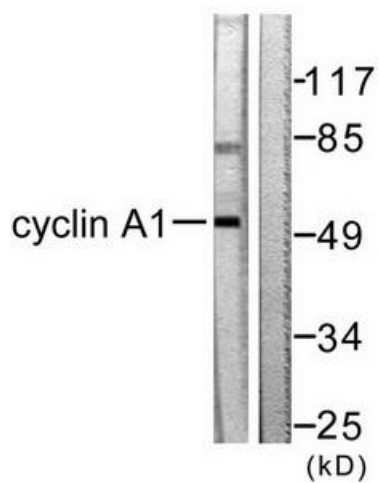
Product Type:	Primary Antibodies
Applications:	IHC, WB
Recommended Dilution:	WB: 1:500~1:3000, IHC: 1:50~1:100, ELISA: 1:40000
Reactivity:	Human, Mouse
Host:	Rabbit
Isotype:	IgG
Clonality:	Polyclonal
Immunogen:	The antiserum was produced against synthesized peptide derived from human Cyclin A1.
Formulation:	Phosphate buffered saline (without Mg ²⁺ and Ca ²⁺), pH 7.4, 150mM NaCl, 0.02% sodium azide and 50% glycerol.
Concentration:	lot specific
Purification:	The antibody was affinity-purified from rabbit antiserum by affinity-chromatography using epitope-specific immunogen.
Conjugation:	Unconjugated
Storage:	Store at -20°C as received.
Stability:	Stable for 12 months from date of receipt.
Gene Name:	cyclin A1
Database Link:	NP_003905 Entrez Gene 12427 Mouse Entrez Gene 8900 Human P78396
Synonyms:	CT146
Note:	Cyclin A1 antibody detects endogenous levels of total Cyclin A1 protein.
Protein Families:	Druggable Genome
Protein Pathways:	Acute myeloid leukemia, Cell cycle, Pathways in cancer, Progesterone-mediated oocyte maturation



[View online »](#)

Product images:

Immunohistochemical analysis of paraffin-embedded human breast carcinoma tissue using Cyclin A1 antibody (#TA312122). The picture on the right is treated with the synthesized peptide.



Western blot analysis of extracts from SKOV3 cells, using Cyclin A1 antibody (#TA312122). The lane on the right is treated with the synthesized peptide.