

Product datasheet for **TA312121**

Cyclin A1 (CCNA1) Rabbit Polyclonal Antibody

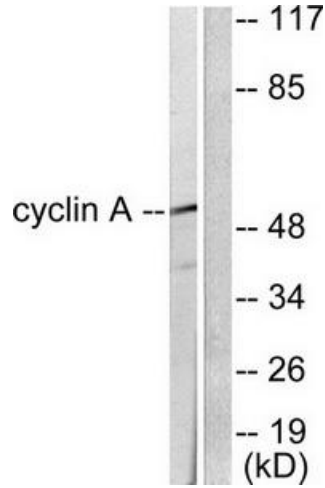
Product data:

Product Type:	Primary Antibodies
Applications:	IF, IHC, WB
Recommended Dilution:	WB: 1:500~1:3000, IHC: 1:50~1:100, IF: 1:100~1:500, ELISA: 1:10000
Reactivity:	Human, Mouse
Host:	Rabbit
Isotype:	IgG
Clonality:	Polyclonal
Immunogen:	The antiserum was produced against synthesized peptide derived from human Cyclin A.
Formulation:	Phosphate buffered saline (without Mg ²⁺ and Ca ²⁺), pH 7.4, 150mM NaCl, 0.02% sodium azide and 50% glycerol.
Concentration:	lot specific
Purification:	The antibody was affinity-purified from rabbit antiserum by affinity-chromatography using epitope-specific immunogen.
Conjugation:	Unconjugated
Storage:	Store at -20°C as received.
Stability:	Stable for 12 months from date of receipt.
Gene Name:	cyclin A1
Database Link:	NP_003905 Entrez Gene 12427 Mouse Entrez Gene 8900 Human P78396
Synonyms:	CT146
Note:	Cyclin A antibody detects endogenous levels of total Cyclin A protein.
Protein Families:	Druggable Genome
Protein Pathways:	Acute myeloid leukemia, Cell cycle, Pathways in cancer, Progesterone-mediated oocyte maturation

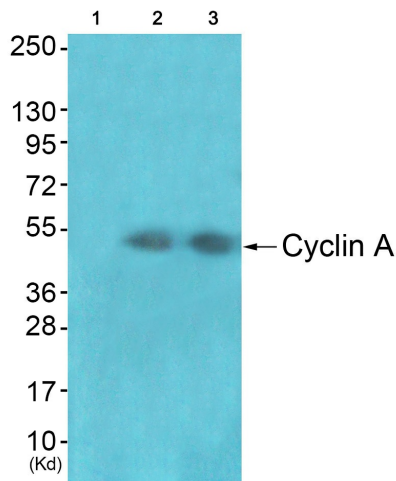


[View online »](#)

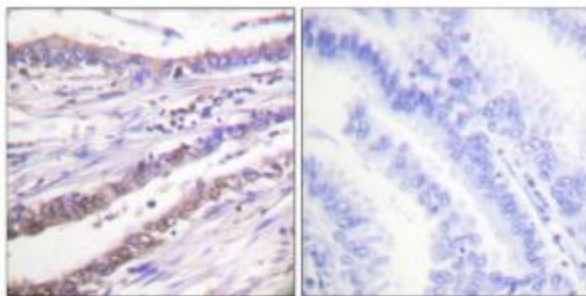
Product images:



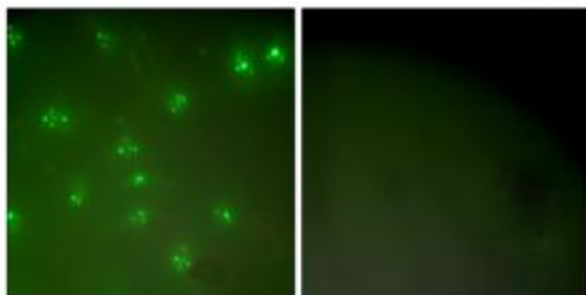
Western blot analysis of extracts from COS7 cells, using Cyclin A antibody (#TA312121). The lane on the right is treated with the synthesized peptide.



Western blot analysis of extracts from JK cells (Lane 2) and cos-7 cells (Lane 3), using Cyclin A Antibody. The lane on the left is treated with synthesized peptide.



Immunohistochemical analysis of paraffin-embedded human lung carcinoma tissue using Cyclin A antibody (#TA312121). The picture on the right is treated with the synthesized peptide.



Immunofluorescence analysis of COS7 cells, using Cyclin A antibody (#TA312121). The picture on the right is treated with the synthesized peptide.