

Product datasheet for **TA312120**

PXR (NR112) Rabbit Polyclonal Antibody

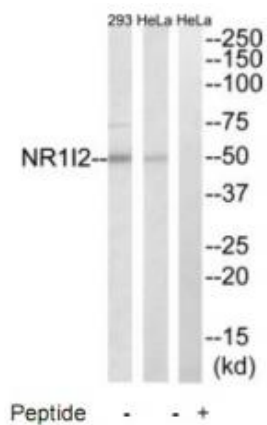
Product data:

Product Type:	Primary Antibodies
Applications:	WB
Recommended Dilution:	WB: 1:500~1:3000, ELISA: 1:40000
Reactivity:	Human
Host:	Rabbit
Isotype:	IgG
Clonality:	Polyclonal
Immunogen:	The antiserum was produced against synthesized peptide derived from internal of human NR112.
Formulation:	Phosphate buffered saline (without Mg ²⁺ and Ca ²⁺), pH 7.4, 150mM NaCl, 0.02% sodium azide and 50% glycerol.
Concentration:	lot specific
Purification:	The antibody was affinity-purified from rabbit antiserum by affinity-chromatography using epitope-specific immunogen.
Conjugation:	Unconjugated
Storage:	Store at -20°C as received.
Stability:	Stable for 12 months from date of receipt.
Gene Name:	nuclear receptor subfamily 1 group I member 2
Database Link:	NP_003880 Entrez Gene 8856 Human O75469
Synonyms:	BXR; ONR1; PAR; PAR1; PAR2; PARq; PRR; PXR; SAR; SXR
Note:	NR112 antibody detects endogenous levels of total NR112 protein.
Protein Families:	Druggable Genome, Nuclear Hormone Receptor, Transcription Factors



[View online »](#)

Product images:



Western blot analysis of extracts from HeLa and 293 cells, using NR1I2 antibody. The lane on the right is treated with the synthesized peptide.