

Product datasheet for **TA312115**

TRADD Rabbit Polyclonal Antibody

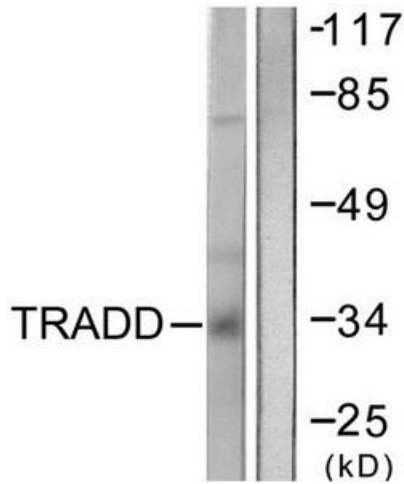
Product data:

Product Type:	Primary Antibodies
Applications:	IHC, WB
Recommended Dilution:	WB: 1:500~1:3000, IHC: 1:50~1:100, ELISA: 1:5000
Reactivity:	Human, Mouse
Host:	Rabbit
Isotype:	IgG
Clonality:	Polyclonal
Immunogen:	The antiserum was produced against synthesized peptide derived from Internal of human TRADD.
Formulation:	Phosphate buffered saline (without Mg ²⁺ and Ca ²⁺), pH 7.4, 150mM NaCl, 0.02% sodium azide and 50% glycerol.
Concentration:	lot specific
Purification:	The antibody was affinity-purified from rabbit antiserum by affinity-chromatography using epitope-specific immunogen.
Conjugation:	Unconjugated
Storage:	Store at -20°C as received.
Stability:	Stable for 12 months from date of receipt.
Gene Name:	TNFRSF1A associated via death domain
Database Link:	NP_003780 Entrez Gene 71609 Mouse Entrez Gene 8717 Human Q15628
Synonyms:	Hs.89862
Note:	TRADD antibody detects endogenous levels of total TRADD protein.
Protein Families:	Druggable Genome
Protein Pathways:	Adipocytokine signaling pathway, Apoptosis, RIG-I-like receptor signaling pathway

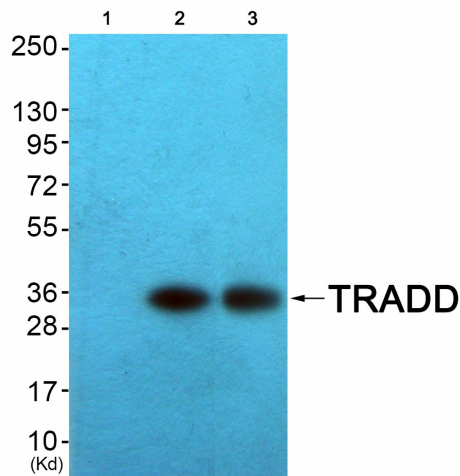


[View online »](#)

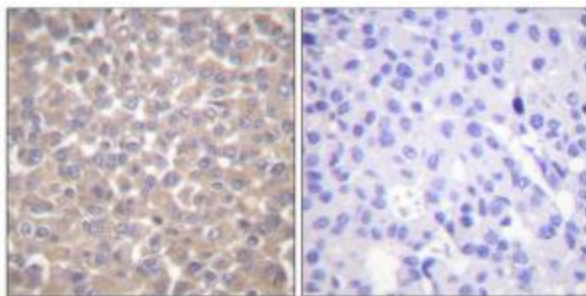
Product images:



Western blot analysis of extracts from COS7 cells, using TRADD antibody. The lane on the right is treated with the synthesized peptide.



Western blot analysis of extracts from COS7 cells (Lane 2) and HuvEc cells (Lane 3), using TRADD Antibody. The lane on the left is treated with synthesized peptide.



Immunohistochemistry analysis of paraffin-embedded human breast carcinoma tissue using TRADD antibody. The picture on the right is treated with the synthesized peptide.