

Product datasheet for **TA312112**

RANKL (TNFSF11) Rabbit Polyclonal Antibody

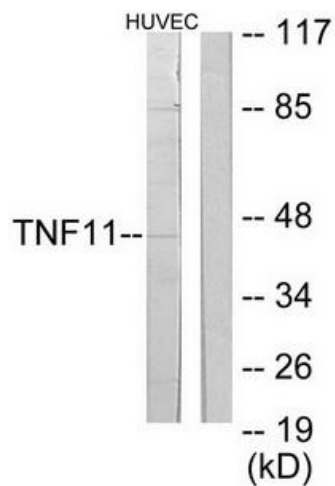
Product data:

| | |
|------------------------------|---|
| Product Type: | Primary Antibodies |
| Applications: | IF, WB |
| Recommended Dilution: | WB: 1:500~1:3000, IF: 1:100~1:500, ELISA: 1:40000 |
| Reactivity: | Human, Mouse |
| Host: | Rabbit |
| Isotype: | IgG |
| Clonality: | Polyclonal |
| Immunogen: | The antiserum was produced against synthesized peptide derived from Internal of human TNF11. |
| Formulation: | Phosphate buffered saline (without Mg ²⁺ and Ca ²⁺), pH 7.4, 150mM NaCl, 0.02% sodium azide and 50% glycerol. |
| Concentration: | lot specific |
| Purification: | The antibody was affinity-purified from rabbit antiserum by affinity-chromatography using epitope-specific immunogen. |
| Conjugation: | Unconjugated |
| Storage: | Store at -20°C as received. |
| Stability: | Stable for 12 months from date of receipt. |
| Gene Name: | tumor necrosis factor superfamily member 11 |
| Database Link: | NP_003692 Entrez Gene 21943 Mouse Entrez Gene 8600 Human O14788 |
| Synonyms: | CD254; hRANKL2; ODF; OPGL; OPTB2; RANKL; sOdf; TRANCE |
| Note: | TNF11 antibody detects endogenous levels of total TNF11 protein. |
| Protein Families: | Druggable Genome, Transmembrane |
| Protein Pathways: | Cytokine-cytokine receptor interaction |

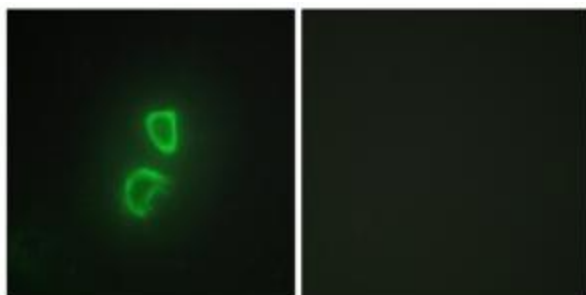


[View online »](#)

Product images:



Western blot analysis of extracts from HuvEc cells, using TNF11 antibody. The lane on the right is treated with the synthesized peptide.



Immunofluorescence analysis of HepG2 cells, using TNF11 antibody. The picture on the right is treated with the synthesized peptide.