

## Product datasheet for **TA312111**

### CaMKI (CAMK1) Rabbit Polyclonal Antibody

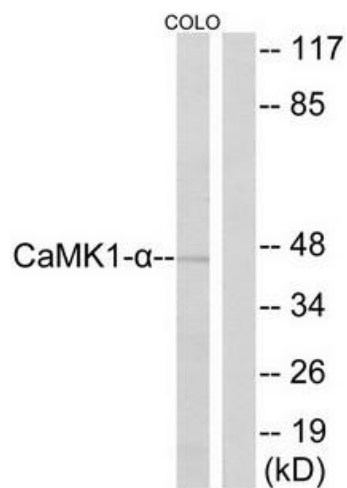
#### Product data:

Product Type:	Primary Antibodies
Applications:	WB
Recommended Dilution:	WB: 1:500~1:3000, IHC: 1:50~1:100, ELISA: 1:1000
Reactivity:	Human, Mouse, Rat
Host:	Rabbit
Isotype:	IgG
Clonality:	Polyclonal
Immunogen:	The antiserum was produced against synthesized non-phosphopeptide derived from human CaMK1-a around the phosphorylation site of threonine 177 (L-S-TP-A-C).
Formulation:	Phosphate buffered saline (without Mg <sup>2+</sup> and Ca <sup>2+</sup> ), pH 7.4, 150mM NaCl, 0.02% sodium azide and 50% glycerol.
Concentration:	lot specific
Purification:	The antibody was affinity-purified from rabbit antiserum by affinity-chromatography using epitope-specific immunogen.
Conjugation:	Unconjugated
Storage:	Store at -20°C as received.
Stability:	Stable for 12 months from date of receipt.
Gene Name:	calcium/calmodulin dependent protein kinase I
Database Link:	<a href="#">NP_003647</a> <a href="#">Entrez Gene 52163 Mouse</a> <a href="#">Entrez Gene 171503 Rat</a> <a href="#">Entrez Gene 8536 Human</a> <a href="#">Q14012</a>
Synonyms:	CAMKI
Note:	CaMK1-. (Ab-177) antibody detects endogenous levels of total CaMK1-. protein.
Protein Families:	Druggable Genome, Protein Kinase



[View online »](#)

## Product images:



Western blot analysis of extracts from COLO cells, using CaMK1-a (Ab-177) antibody. The lane on the right is treated with the synthesized peptide.