

Product datasheet for **TA312104**

Vimentin (VIM) Rabbit Polyclonal Antibody

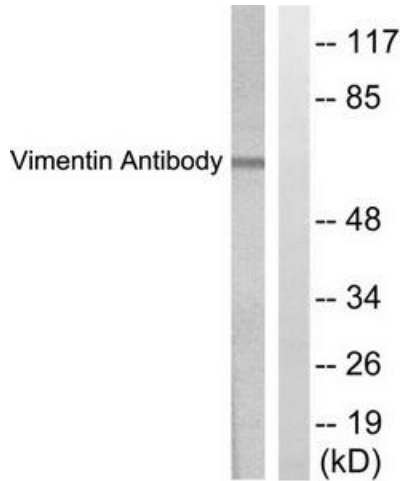
Product data:

Product Type:	Primary Antibodies
Applications:	IHC, WB
Recommended Dilution:	WB: 1:500~1:3000, IHC: 1:50~1:100, ELISA: 1:10000
Reactivity:	Human, Mouse, Rat
Host:	Rabbit
Isotype:	IgG
Clonality:	Polyclonal
Immunogen:	The antiserum was produced against synthesized peptide derived from Internal of human vimentin.
Formulation:	Phosphate buffered saline (without Mg ²⁺ and Ca ²⁺), pH 7.4, 150mM NaCl, 0.02% sodium azide and 50% glycerol.
Concentration:	lot specific
Purification:	The antibody was affinity-purified from rabbit antiserum by affinity-chromatography using epitope-specific immunogen.
Conjugation:	Unconjugated
Storage:	Store at -20°C as received.
Stability:	Stable for 12 months from date of receipt.
Gene Name:	vimentin
Database Link:	NP_003371 Entrez Gene 22352 Mouse Entrez Gene 81818 Rat Entrez Gene 7431 Human P08670
Synonyms:	CTRCT30; HEL113
Note:	Vimentin antibody detects endogenous levels of total vimentin protein.
Protein Families:	ES Cell Differentiation/IPS

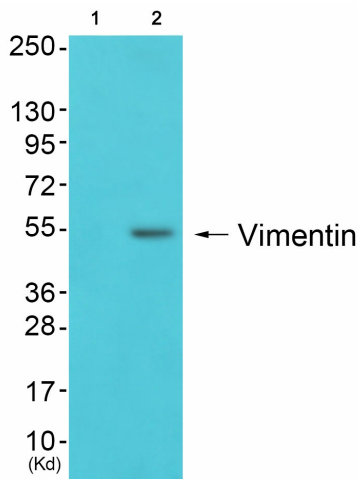


[View online »](#)

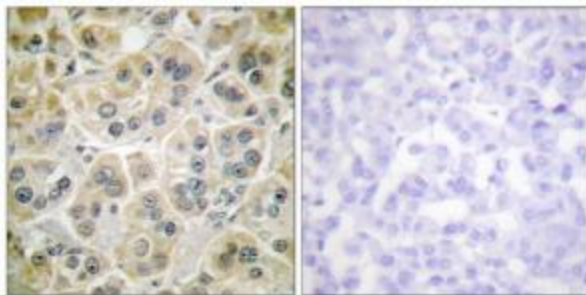
Product images:



Western blot analysis of extracts from HepG2 cells, treated with Adriamycin (0.5uM, 5hours), using Vimentin antibody. The lane on the right is treated with the synthesized peptide.



Western blot analysis of extracts from 293 cells (Lane 2), using Vimentin Antibody. The lane on the left is treated with synthesized peptide.



Immunohistochemistry analysis of paraffin-embedded human colon carcinoma tissue using Vimentin antibody. The picture on the right is treated with the synthesized peptide.