

Product datasheet for **TA312099**

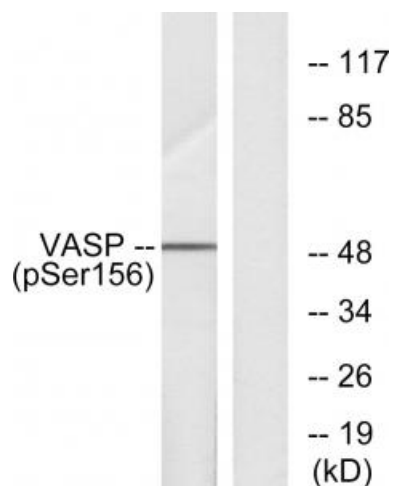
VASP Rabbit Polyclonal Antibody

Product data:

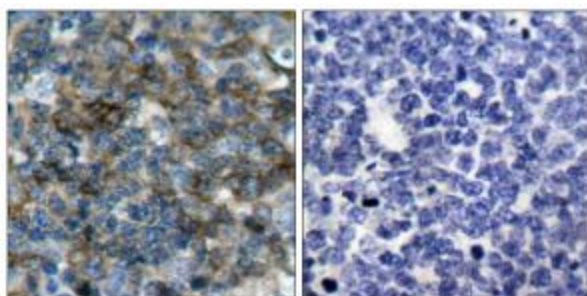
Product Type:	Primary Antibodies
Applications:	IHC, WB
Recommended Dilution:	WB: 1:500~1:3000, IHC: 1:50~1:100, ELISA: 1:4000
Reactivity:	Human, Mouse, Rat
Modifications:	Phospho-specific
Host:	Rabbit
Isotype:	IgG
Clonality:	Polyclonal
Immunogen:	The antiserum was produced against synthesized phosphopeptide derived from human VASP around the phosphorylation site of serine 157 (R-V-SP-N-A).
Formulation:	Phosphate buffered saline (without Mg ²⁺ and Ca ²⁺), pH 7.4, 150mM NaCl, 0.02% sodium azide and 50% glycerol.
Concentration:	lot specific
Purification:	The antibody was affinity-purified from rabbit antiserum by affinity-chromatography using epitope-specific immunogen.
Conjugation:	Unconjugated
Storage:	Store at -20°C as received.
Stability:	Stable for 12 months from date of receipt.
Gene Name:	vasodilator-stimulated phosphoprotein
Database Link:	NP_003361 Entrez Gene 22323 Mouse Entrez Gene 361517 Rat Entrez Gene 7408 Human P50552
Synonyms:	vasodilator-stimulated phosphoprotein
Note:	VASP (phospho-Ser157) antibody detects endogenous levels of VASP only when phosphorylated at serine 157.
Protein Families:	Druggable Genome, Stem cell - Pluripotency
Protein Pathways:	Fc gamma R-mediated phagocytosis, Focal adhesion, Leukocyte transendothelial migration



[View online »](#)

Product images:

Western blot analysis of extracts from NIH-3T3 cells treated with forskolin 40 μ M 30', using VASP (Phospho-Ser157) Antibody. The lane on the right is treated with the synthesized peptide.



Immunohistochemical analysis of paraffin-embedded human tonsil tissue, using VASP (phospho-Ser157) antibody. The picture on the right is treated with the synthesized peptide.