

## Product datasheet for **TA312097**

### VASP Rabbit Polyclonal Antibody

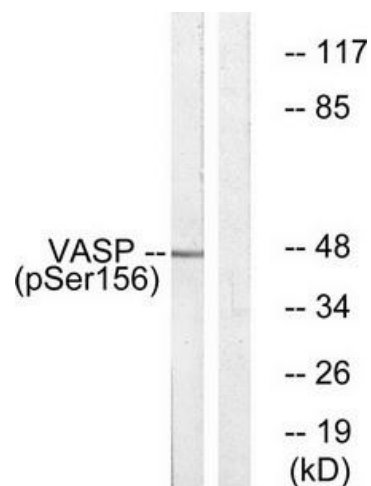
#### Product data:

Product Type:	Primary Antibodies
Applications:	IHC, WB
Recommended Dilution:	WB: 1:500~1:3000, IHC: 1:50~1:100, ELISA: 1:10000
Modifications:	Phospho-specific
Host:	Rabbit
Isotype:	IgG
Clonality:	Polyclonal
Immunogen:	The antiserum was produced against synthesized phosphopeptide derived from human VASP around the phosphorylation site of Ser157.
Formulation:	Phosphate buffered saline (without Mg <sup>2+</sup> and Ca <sup>2+</sup> ), pH 7.4, 150mM NaCl, 0.02% sodium azide and 50% glycerol.
Concentration:	lot specific
Purification:	The antibody was affinity-purified from rabbit antiserum by affinity-chromatography using epitope-specific immunogen.
Conjugation:	Unconjugated
Storage:	Store at -20°C as received.
Stability:	Stable for 12 months from date of receipt.
Gene Name:	vasodilator-stimulated phosphoprotein
Database Link:	<a href="#">NP_003361</a> <a href="#">Entrez Gene 7408 Human</a> <a href="#">P50552</a>
Synonyms:	vasodilator-stimulated phosphoprotein
Note:	VASP (Phospho-Ser157) Antibody detects endogenous levels of VASP only when phosphorylated at Ser157.
Protein Families:	Druggable Genome, Stem cell - Pluripotency
Protein Pathways:	Fc gamma R-mediated phagocytosis, Focal adhesion, Leukocyte transendothelial migration

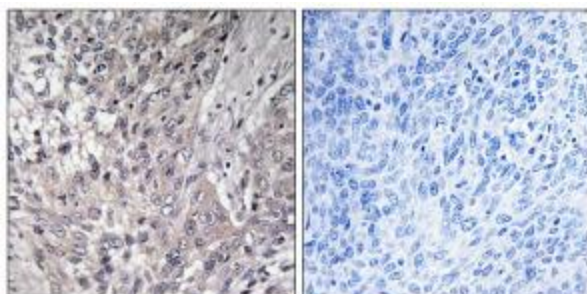


[View online »](#)

## Product images:



Western blot analysis of extracts from HeLa, using VASP (Phospho-Ser157) Antibody. The lane on the right is treated with the synthesized peptide.



Immunohistochemistry analysis of paraffin-embedded human lung carcinoma using VASP (Phospho-Ser157) Antibody. The picture on the right is treated with the synthesized peptide.