

## Product datasheet for **TA312094**

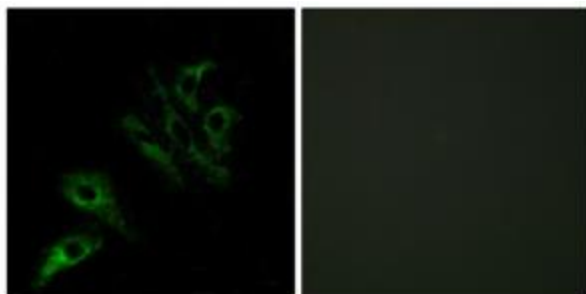
### CD252 (TNFSF4) Rabbit Polyclonal Antibody

#### Product data:

Product Type:	Primary Antibodies
Applications:	IF
Recommended Dilution:	IF: 1:100~1:500, ELISA: 1:20000
Reactivity:	Human
Host:	Rabbit
Isotype:	IgG
Clonality:	Polyclonal
Immunogen:	The antiserum was produced against synthesized peptide derived from internal of human TNFL4.
Formulation:	Phosphate buffered saline (without Mg <sup>2+</sup> and Ca <sup>2+</sup> ), pH 7.4, 150mM NaCl, 0.02% sodium azide and 50% glycerol.
Concentration:	lot specific
Purification:	The antibody was affinity-purified from rabbit antiserum by affinity-chromatography using epitope-specific immunogen.
Conjugation:	Unconjugated
Storage:	Store at -20°C as received.
Stability:	Stable for 12 months from date of receipt.
Gene Name:	tumor necrosis factor superfamily member 4
Database Link:	<a href="#">NP_003317</a> <a href="#">Entrez Gene 7292 Human P23510</a>
Synonyms:	CD134L; CD252; GP34; OX-40L; OX40L; TXGP1
Note:	TNFL4 antibody detects endogenous levels of total TNFL4 protein.
Protein Families:	Druggable Genome, Transmembrane
Protein Pathways:	Cytokine-cytokine receptor interaction



[View online »](#)

**Product images:**

Immunofluorescence analysis of HeLa cells, using TNFL4 antibody. The picture on the right is treated with the synthesized peptide.