

Product datasheet for **TA312091**

Claudin 5 (CLDN5) Rabbit Polyclonal Antibody

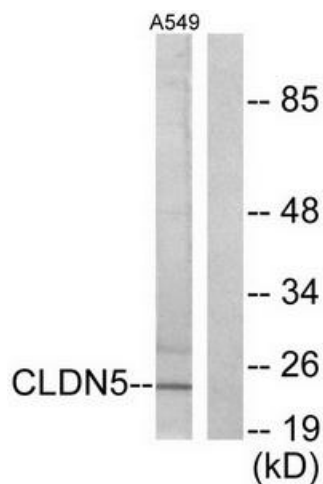
Product data:

Product Type:	Primary Antibodies
Applications:	IHC, WB
Recommended Dilution:	WB: 1:500~1:3000, IHC: 1:50~1:100, ELISA: 1:40000
Reactivity:	Human, Mouse, Rat
Host:	Rabbit
Isotype:	IgG
Clonality:	Polyclonal
Immunogen:	The antiserum was produced against synthesized peptide derived from human CLDN5.
Formulation:	Phosphate buffered saline (without Mg ²⁺ and Ca ²⁺), pH 7.4, 150mM NaCl, 0.02% sodium azide and 50% glycerol.
Concentration:	lot specific
Purification:	The antibody was affinity-purified from rabbit antiserum by affinity-chromatography using epitope-specific immunogen.
Conjugation:	Unconjugated
Storage:	Store at -20°C as received.
Stability:	Stable for 12 months from date of receipt.
Gene Name:	claudin 5
Database Link:	NP_003268 Entrez Gene 12741 Mouse Entrez Gene 65131 Rat Entrez Gene 7122 Human O00501
Synonyms:	AWAL; BEC1; CPETRL1; TMVCF
Note:	Claudin 5 antibody detects endogenous levels of total CLDN5 protein.
Protein Families:	Transmembrane
Protein Pathways:	Cell adhesion molecules (CAMs), Leukocyte transendothelial migration, Tight junction

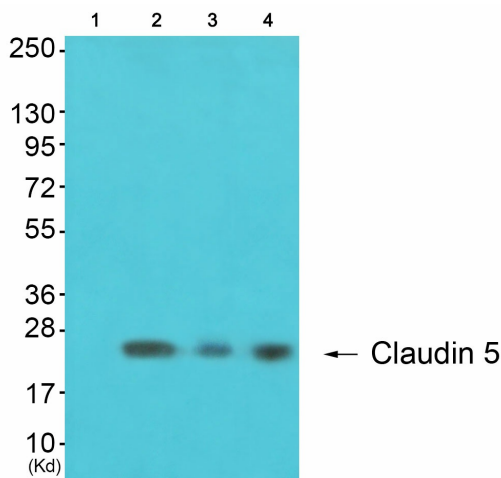


[View online »](#)

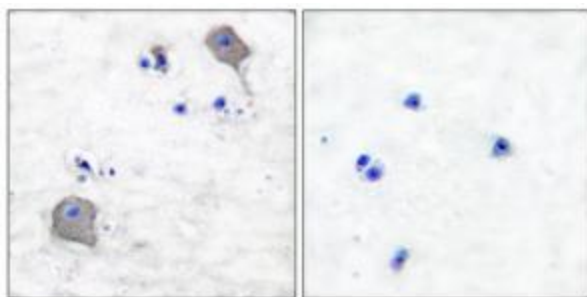
Product images:



Western blot analysis of extracts from A549 cells, using Claudin 5 antibody (#TA312091)The lane on the right is treated with the synthesized peptide.



Western blot analysis of extracts from 293 cells (Lane 2), K562 cells (Lane 3) and 3T3 cells (Lane 4), using Claudin 5 Antibody. The lane on the left is treated with synthesized peptide.



Immunohistochemical analysis of paraffin-embedded human brain tissue using Claudin 5 antibody (#TA312091).The picture on the right is treated with the synthesized peptide.