

Product datasheet for **TA312086**

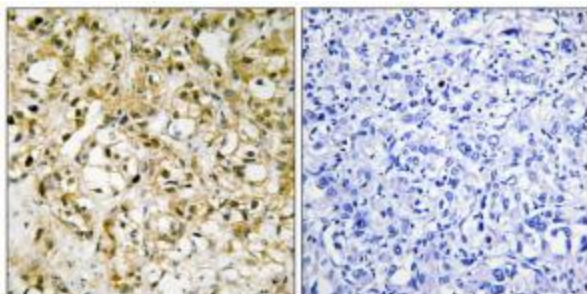
mtTFA (TFAM) Rabbit Polyclonal Antibody

Product data:

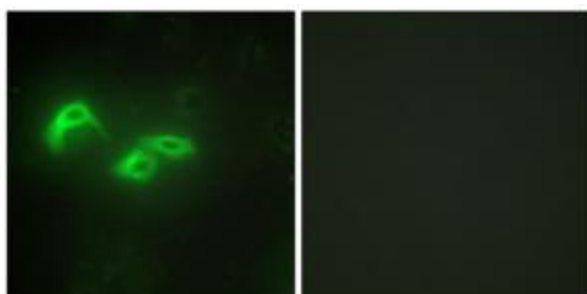
Product Type:	Primary Antibodies
Applications:	IF, IHC
Recommended Dilution:	IHC: 1:50~1:100, IF: 1:100~1:500, ELISA: 1:40000
Reactivity:	Human
Host:	Rabbit
Isotype:	IgG
Clonality:	Polyclonal
Immunogen:	The antiserum was produced against synthesized peptide derived from internal of human TFAM.
Formulation:	Phosphate buffered saline (without Mg ²⁺ and Ca ²⁺), pH 7.4, 150mM NaCl, 0.02% sodium azide and 50% glycerol.
Concentration:	lot specific
Purification:	The antibody was affinity-purified from rabbit antiserum by affinity-chromatography using epitope-specific immunogen.
Conjugation:	Unconjugated
Storage:	Store at -20°C as received.
Stability:	Stable for 12 months from date of receipt.
Gene Name:	transcription factor A, mitochondrial
Database Link:	NP_036383 Entrez Gene 7019 Human Q00059
Synonyms:	mitochondrial; mitochondrial transcription factor A; MtTF1; mtTFA; OTTHUMP00000019633; TCF6; TCF6L1; TCF6L2; TCF6L3; Transcription factor 6-like 2 (mitochondrial transcription factor); transcription factor A
Note:	TFAM antibody detects endogenous levels of total TFAM protein.
Protein Families:	Druggable Genome, Transcription Factors
Protein Pathways:	Huntington's disease



[View online »](#)

Product images:

Immunohistochemistry analysis of paraffin-embedded human liver carcinoma tissue, using TFAM antibody. The picture on the right is treated with the synthesized peptide.



Immunofluorescence analysis of HepG2 cells, using TFAM antibody. The picture on the right is treated with the synthesized peptide.