

Product datasheet for **TA312083**

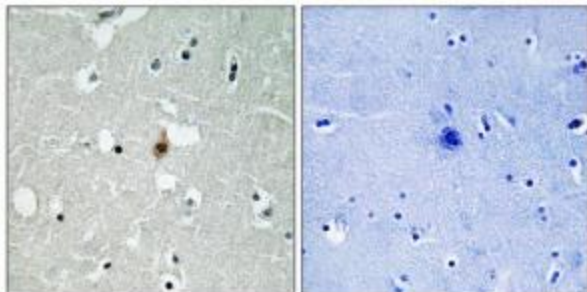
TCF3 / E2A (TCF3) Rabbit Polyclonal Antibody

Product data:

Product Type:	Primary Antibodies
Applications:	IHC
Recommended Dilution:	IHC: 1:50~1:100, ELISA: 1:5000
Reactivity:	Human, Mouse, Rat
Host:	Rabbit
Isotype:	IgG
Clonality:	Polyclonal
Immunogen:	The antiserum was produced against synthesized peptide derived from Internal of human E2A.
Formulation:	Phosphate buffered saline (without Mg ²⁺ and Ca ²⁺), pH 7.4, 150mM NaCl, 0.02% sodium azide and 50% glycerol.
Concentration:	lot specific
Purification:	The antibody was affinity-purified from rabbit antiserum by affinity-chromatography using epitope-specific immunogen.
Conjugation:	Unconjugated
Storage:	Store at -20°C as received.
Stability:	Stable for 12 months from date of receipt.
Gene Name:	transcription factor 3
Database Link:	NP_003191 Entrez Gene 21423 MouseEntrez Gene 171046 RatEntrez Gene 6929 Human P15923
Synonyms:	AGM8; bHLHb21; E2A; E47; ITF1; TCF-3; VDIR
Note:	E2A antibody detects endogenous levels of total E2A protein.
Protein Families:	Druggable Genome, ES Cell Differentiation/IPS, Induced pluripotent stem cells, Transcription Factors



[View online »](#)

Product images:

Immunohistochemistry analysis of paraffin-embedded human brain tissue using E2A antibody. The picture on the right is treated with the synthesized peptide.