

Product datasheet for **TA312080**

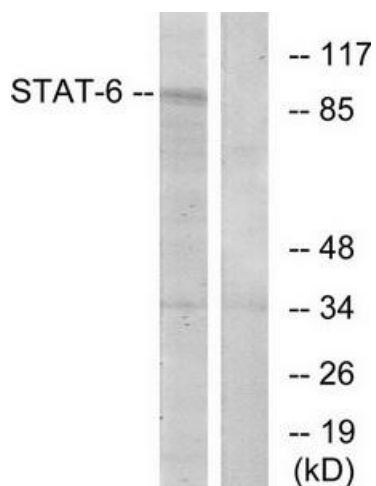
STAT6 Rabbit Polyclonal Antibody

Product data:

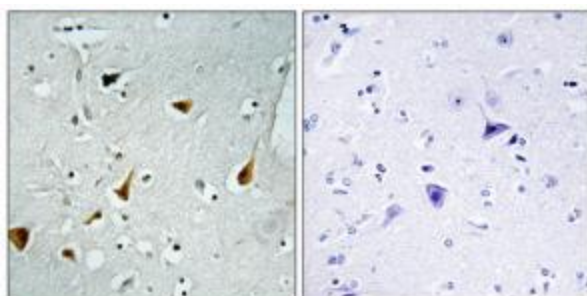
Product Type:	Primary Antibodies
Applications:	IHC, WB
Recommended Dilution:	WB: 1:500~1:3000, IHC: 1:50~1:100, ELISA: 1:5000
Reactivity:	Human
Host:	Rabbit
Isotype:	IgG
Clonality:	Polyclonal
Immunogen:	The antiserum was produced against synthesized non-phosphopeptide derived from human STAT6 around the phosphorylation site of Tyrosine 641.
Formulation:	Phosphate buffered saline (without Mg ²⁺ and Ca ²⁺), pH 7.4, 150mM NaCl, 0.02% sodium azide and 50% glycerol.
Concentration:	lot specific
Purification:	The antibody was affinity-purified from rabbit antiserum by affinity-chromatography using epitope-specific immunogen.
Conjugation:	Unconjugated
Storage:	Store at -20°C as received.
Stability:	Stable for 12 months from date of receipt.
Gene Name:	signal transducer and activator of transcription 6
Database Link:	NP_003144 Entrez Gene 6778 Human P42226
Synonyms:	D12S1644; IL-4-STAT; STAT6B; STAT6C
Note:	STAT6 (Ab-641) Antibody detects endogenous levels of STAT6 protein around Tyrosine 641.
Protein Families:	Druggable Genome, ES Cell Differentiation/IPS, Stem cell relevant signaling - DSL/Notch pathway, Stem cell relevant signaling - JAK/STAT signaling pathway, Transcription Factors
Protein Pathways:	Jak-STAT signaling pathway



[View online »](#)

Product images:

Western blot analysis of extracts from HeLa cells, using STAT6 (Ab-641) Antibody. The lane on the right is treated with the synthesized peptide.



Immunohistochemistry analysis of paraffin-embedded human brain tissue, using STAT6 (Ab-641) Antibody. The picture on the right is treated with the synthesized peptide.