

Product datasheet for **TA312076**

beta Synuclein (SNCB) Rabbit Polyclonal Antibody

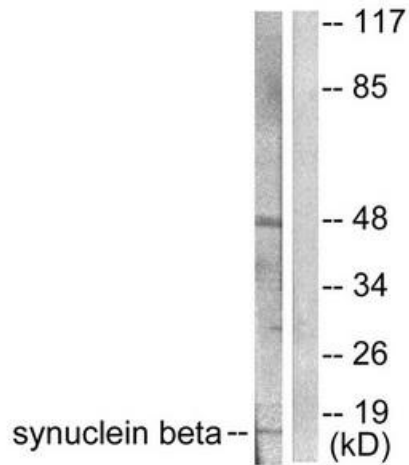
Product data:

Product Type:	Primary Antibodies
Applications:	IF, IHC, WB
Recommended Dilution:	WB: 1:500~1:3000, IHC: 1:50~1:100, IF: 1:100~1:500, ELISA: 1:5000
Reactivity:	Human, Mouse, Rat
Host:	Rabbit
Isotype:	IgG
Clonality:	Polyclonal
Immunogen:	The antiserum was produced against synthesized peptide derived from human Synuclein β antibody.
Formulation:	Phosphate buffered saline (without Mg ²⁺ and Ca ²⁺), pH 7.4, 150mM NaCl, 0.02% sodium azide and 50% glycerol.
Concentration:	lot specific
Purification:	The antibody was affinity-purified from rabbit antiserum by affinity-chromatography using epitope-specific immunogen.
Conjugation:	Unconjugated
Storage:	Store at -20°C as received.
Stability:	Stable for 12 months from date of receipt.
Gene Name:	synuclein beta
Database Link:	NP_003076 Entrez Gene 104069 MouseEntrez Gene 113893 RatEntrez Gene 6620 Human Q16143
Synonyms:	beta; beta-synuclein; synuclein
Note:	Synuclein . antibody detects endogenous levels of total Synuclein . protein.

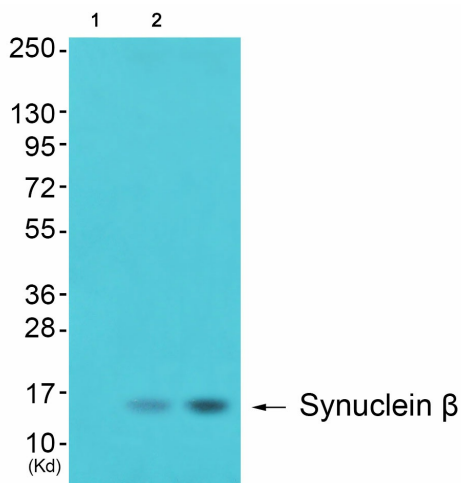


[View online »](#)

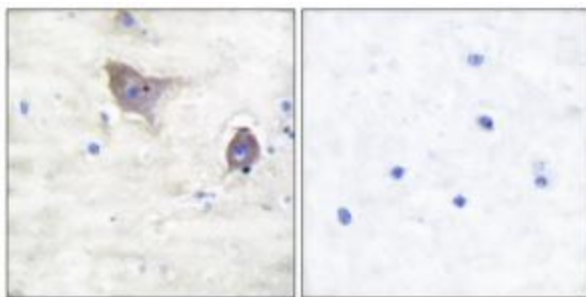
Product images:



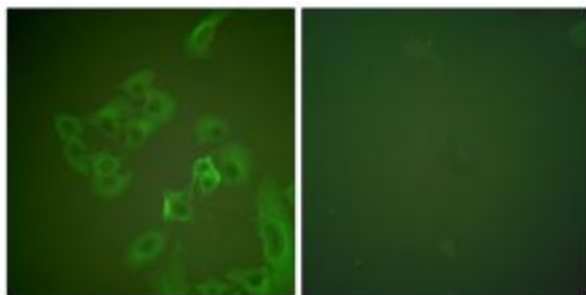
Western blot analysis of extracts from HeLa cells, using Synuclein β antibody (#TA312076). The lane on the right is treated with the synthesized peptide.



Western blot analysis of extracts from 293 cells (Lane 2) and cos-7 cells (Lane 3), using Synuclein β Antibody. The lane on the left is treated with synthesized peptide.



Immunohistochemical analysis of paraffin-embedded human brain tissue using Synuclein β antibody (#TA312076). The picture on the right is treated with the synthesized peptide.



Immunofluorescence analysis of A549 cells, using Synuclein β antibody (#TA312076). The picture on the right is treated with the synthesized peptide.